

LIBRARY  
RECORDED  
FEB 23 1954  
Plant Department of Agriculture  
America

# Swedberg's

## PLANT GUIDE

Battle Lake Values in Fruit, Windbreak  
Minn. and Evergreen Trees; Shrubs;  
Flowers, Berries and Plants

### Spring 1954

# PRICE LIST

ACCLIMATED TO NORTHERN CONDITIONS

### 1954's Queen of Roses!

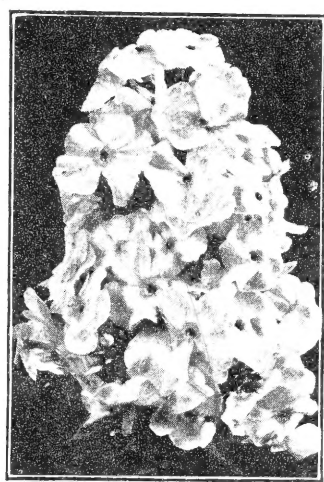
## Mojave

(Mo-ha-vee)



Plant Pat. No. 1176

\$3.00 each; 3 or more, \$2.65 each



PHLOX

### Phlox Collection

- 1 White,
- 1 Purple
- 1 Red,
- 1 Pink
- 1 Two-Tone
- 1 Blue

All 6 Plants

### Only \$1.95, Prepaid

Collection of 12 \$3.50  
Postpaid

## 2 CHOICE NEW SUPER HARDY MINNESOTA CHERRIES

# NORTH STAR



**NEW DWARF PIE CHERRY** from U. of Minn. matures big, glistening mahogany-red, real pie cherries on DWARF 5 to 7 ft. trees—early in July! North Star fruits are of superb quality, Morello type, free stone,

**MINNESOTA'S JUMBO PIE CHERRY:**  
Extra big, sparkling red, genuine pie cherries—loaded on full sized 8 to 10 ft. cherry trees that thrive in Minnesota's severe climate!

See Cherry-Plums Page 4

# HOW TO ORDER

## READ BEFORE ORDERING

"Service, Quality and Fair Prices since 1915."

We deeply appreciate your loyalty and kind patronage, and hope to serve you better this season because of larger supplies and better stock.

We do not send out seconds or inferior grades.

Northern trees and shrubs are hardy. Nursery stock that can stand the winters in Otter Tail County can stand the severest weather in the United States and Alaska, where our stock goes.

**TERMS:** Cash with order unless otherwise agreed upon. Remit by P.O. or Express Money Orders, bank draft or if by personal check (add exchange charge on \$3.00 orders and less).

**ORDER EARLY:** You may send order early and remit when requesting your shipment if desired.

**HOW TO SHIP:** We ship by express or freight; smaller shipments by parcel post. Prices in this list are f.o.b. Battle Lake unless noted. If you cannot figure postage,

have us ship C.O.D. for postage. Order should be not less than \$1.00.

**PLANTING INSTRUCTIONS** accompany each order sent out in the shipping and inspection tag.

**DOZEN RATES:** You must order not less than 3 each of 4 varieties to get dozen rate on fruits, and 6 of each variety of perennial flowers to get dozen rates.

**GUARANTEE:** Any stock failing to grow will be replaced at one-half the original cost if report is made within 90 days of receipt of order. We will replace any portion of the stock that proves untrue to name or refund price paid for such portion. Send sales slip and order number if possible.

**LANDSCAPE PLANS:** We will make a neat colored plan of house foundation planting, front yard, side yard, and back yard Outdoor Living Room plantings. A larger plan for public parks, school grounds, and cemeteries, etc., can also be secured at slightly higher price. Be sure to give full dimensions and show all existing windows, doors, trees, and walks.

If you want a Plan drawn for you send for special ruled paper with instructions for you. Send \$5.00 to us and we will credit you \$5.00 when \$50.00 or more in Nursery Stock is on order.

# INDEX

- Apples ..... 53
- Asparagus ..... 5
- Begonias & Cannas ..... 23
- Blackberries ..... 27
- Blueberries ..... 27
- Boysenberries ..... 6
- Cherries ..... 4
- Cherry-Plums ..... 4
- Chrysanthemums ..... 21
- Clematis ..... 13
- Currants ..... 13
- Flowering Crabs ..... 21
- Gladiolus ..... 24
- Gooseberries ..... 21
- Grapes ..... 21
- Hedges p. 7. Prices p. 10
- Lilacs ..... 7
- Mums, Hardy ..... 21
- Pears ..... 18-20
- Perennials ..... 18-20
- Plums and Prunes ..... 4
- Raspberries ..... 21
- Rhubarb ..... 16
- Roses ..... 16-17
- Shade Trees ..... 11-12-13
- Shrubs ..... 7-8-9-10
- Strawberries ..... 15
- Vines ..... 15
- Windbreaks ..... 10

## FREE PREMIUMS FOR EARLY ORDERS

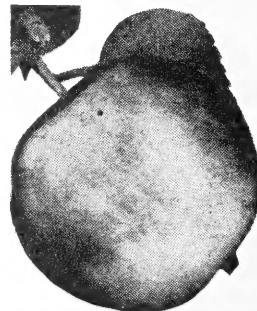
We will in-close Free Premiums in your Early Orders of \$5.00 or more.

### FRUIT TREE STOCK SEEDLINGS

	Per 10	50	100
PLUM and APPLE Seedlings	\$1.40	\$5.50	\$10.00
" " Heavy	1.75	7.50	12.00
PEAR Seedlings	1.75	8.00	15.00

SPECIAL ON APPLES AND PLUMS IN 3 to 4 Foot Sizes. SEE Page 21...

Alexandrea, Minn. May 12, 1953  
xxx We are pleased with the fine Apple Trees. M



BEACON APPLE

Britton S. Dak. May 1953  
I was very pleased with the Stock you sent. Mrs. M.J.R.

### HARDY APRICOTS

**MANCHU**- Good lemon yellow self pollenizing and free-stone. One of largest.  
**SCOUT**-Hardy Canadian fruit 4-6ft. trees \$1.75 each 10 for ..... \$16.00

### PEARS

**GOLDEN SPICE**-Minn. No.4- Worth trying this far to the north..  
**PARKER**-Fruit medium large clear med. yellow with a blush. Juicy, sweet, tender. Hardy in southern Minn. 5-6 ft. trees Each \$1.75

Winthrop, Minn. — I have had very good results from the trees, over 100 all together, Cherry, Plum and Apple, that I purchased from you the last couple years. Have had some fruit on them the last two years. Yours truly, Martin H.K.

# Minnesota Grown Apple Trees

## SUMMER APPLES

- ✓ **ANOKA**—Early bearing, often fruiting the second year after planting. Good quality and very hardy.
- ✓ **BEACON**—A recent introduction of the Minn. Experiment Station that promises to take the place of Duchess. Beacon ripens with Duchess, is completely red and uniform fair size, excellent for eating fresh or canning. Very hardy and annual cropper. Can be stored in cellar for two or three months, unlike other early apples.
- ✓ **Oriole**  
NO. 714 — Attractive with red stripes over yellow base; almost red when ripe. Very tender and juicy. Quality extra good. A hardy summer apple ripening in August.

- ✓ **YELLOW TRANSPARENT**—One of earliest. Bears large crops of yellow thin-skinned apples; good for pies or eating off the tree.

## FALL APPLES

- ✓ **ERICKSON**—A hardy standby. Ripens almost with the Duchess. Large and deep red color.
- ✓ **Lakeland** is a new apple a bit later than Wealthy, it is better on every count. A bright red. The apple does not drop easily. A sure winner, you get apples every year.
- ✓ **Min-Jon** "The Minnesota Jonathan," is medium size, rounded, very dark rich red color. Quality is good, regular fall cropper and fruit hangs well to tree.
- ✓ **NO. 790**—"Tip Top Baking" apple of Rome Beauty type. Just the right size, texture, sugar content, etc., for baking.
- ✓ **NO. WEST GREENING**—Large, round, yellow-green with bronze blush. Hardy, subacid, and a keeper. Used for pies and baking.
- ✓ **WEALTHY**—Hardy Minn. apple of vigorous habit. Good quality, good appearance, and fine keeper.

## WINTER APPLES

- ✓ **HARALSON**—A great big red apple originated by Minn. Fruit Breeding Farm that ranks tops in every way. Quality excellent. They keep in ordinary cool cellar all winter. The trees are rugged and hardy and free from fireblight. Does not form bad crotches. Hardy into Canada. Bears on young trees 2-3 years after planting.
- ✓ **HIBERNAL**—An extremely hardy tree. Ideal for top working by budding or grafting 3, 5, 12 or more varieties of one tree.
- ✓ **Fireside**  
NO. 993—"Minnesota Delicious." Does not have Delicious shape but it sure has the most delicious flavor of any HARDY apple. Large mid-to-late winter apple; medium red color over greenish yellow base. It's good.
- ✓ **NO. 1007, PRAIRIE SPY** Considered to be as of high quality as any apple in the U.S. Medium size, later winter apple; bright color over yellow base. Excellent keeper and hangs well to tree. A little late for northern sections but try at least one to be sure.

- ✓ **Redwell**  
NO. 638 — The "Winter Wealthy" although it is quite superior to it in many ways. It hangs to the tree until a bright red. Good eating when picked or in February and March.

## NEW APPLE INTRODUCTIONS

We are headquarters for all new Minnesota Fruits

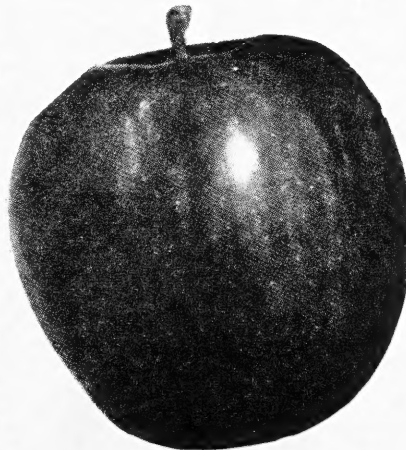
- ✓ **MANTET**—Summer apple from Canadian station that is 2 weeks earlier than Duchess. One size 5-6 ft. only.

## PRICES OF APPLES AND CRABS ON THIS PAGE IF NOT PRICED SEPARATELY

Height	EACH PER 20
3-4 ft...	\$1.00 @ \$ .90
4-5 ft...	1.20 @ 1.05
5-6 ft...	1.40 @ 1.25
5-7 ft...	1.50 @ 1.40

Watch for sizes for each variety.

**APPLE GRAFTS -1 yr. old**  
Of Whitney Crab, Wealthy Apple, Minjon & Prairie Spy Apples. 2 of Each 8 for \$1.75; 6 of Each or 24 for \$4.95 Postpaid



HARALSON

**"Northern Rooted"  
Fruit Trees**



- ✓ **Chestnut**  
NO. 240 **CRAB**—Large high quality dessert crab, keeping well into Nov. Flesh yellow, skin a light red blush or striped over yellow.
- ✓ **EARLY STRAWBERRY**—Early, hardy, good yielding crab. Good eaten fresh or canned.
- ✓ **SWEET RUSSETT**—Very sweet and tastes like pear; good canner and heavy yielder. Fruit greenish, ripening to yellow, with russet cast.
- ✓ **WHITNEY**—One of largest crabs grown. Very hardy, dependable yielder, good for sauce or jam or eating fresh. Ripens in later August.
- ✓ **VIRGINIA**—Hardy vigorous grower. For pickling or jelly.

- ✓ **RED RIVER**—Dr. Yeager's fine new crab crossed between Dolgo and Delicious apple. Wonderful quality and flavor as eaten fresh. Late large crab, round to oval; bright red skin and solid flesh. Good keeper.
- ✓ **DOLGO CRAB**—Pink flowers and small bright red crabs contrast against the dark green leaves making it very ornamental. Free from blight and crabs make good jelly even when dead ripe. Same price as New Apples.

## FLOWERING CRABS

- ✓ **HOPA CRAB**—Leaves are a reddish-green all summer—enhancing the rosy flowers borne in profusion. Small red fruit in clusters hang to tree.

Transplants from Seedlings 30¢ each; 10 for...\$2.65

## GRAFTED TREES

5 to 6ft. trees Each \$2.50  
10 or more trees Each 2.20

## ALMEY CRAB

**ROSY BLOOM -FLAME CRAB**  
Developed by the Morden Canadian Station. Blossoms glistening red with white star affect. 4 yr. trees--  
5 to 6ft. trees Each \$3.75  
4-to 5ft. trees ea. 3.25  
3 to 4ft. trees ea. 2.95

## BECHTEL'S

Double Pink Blossoms!

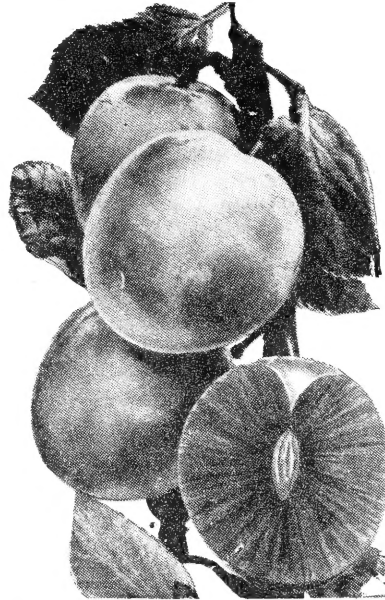
The branches are hidden by a spectacular display of delicate double pink flowers that look like miniature Roses. Ideal for the smaller yard. An improved hardy form 3 to 4 feet. Each \$2.00

# PLUMS

## CHERRY-PLUM PRICES<sup>20</sup>

Height	Calp.	Each	Each
5-6 ft.	11/16"	\$1.75	\$1.60
4-5 ft.	9/16"	1.55	1.35
3-4 ft.	7/16"	1.25	1.10

PRICES on this page apply to all the varieties except when the price appears below that variety



Giant Red-Fleshed Cherry-Plum (Sapa)

## BUSH CHERRY

Nanking (Prunus Tomentosa). See Shrubs pages 8 and 9.

Fruit on Small Sized Trees



Prof. T. S. Weir, Supt. Minn. Fruit Breeding Farm

## PROF. HANSON'S HYBRIDS

HANSON'S BUSH CHERRY—Improved besseyi sand cherry. Low growing shrub that produces abundance of juicy dark fruit for canning or eating fresh.

2 to 3 ft. .... \$0.85 each; 2 for \$1.55  
18 to 24 in. .... .70 each; 2 for 1.25

AMBER. A new variety received by us direct from the South Dakota Station. Strong grower with amber-yellow fruit. Foliage a creamy yellow in fall. Very sweet.

RUBY. The first red-fleshed variety to appear among these Hansen Bush Cherries. Makes up into a fine red sauce. Skin is black.

RUBY and AMBER PRICES  
2-3ft size each,,,,,\$1.25

SOUTH DAKOTA #27— A true pollinizer, very good quality. Free stone

WANETA—Fruit is immense in size, delicious quality, beautiful red color, small pit. Trees bear heavy annual crops and on young trees.

## NEW CANADIAN CHERRIES

SAPA-IMPROVED— Originated at Morden Station, Canada. Blood red fruit. Makes the finest sauce, jam, or jelly

We have 2 varieties. Late and Early—4 to 6ft. trees  
Each \$1.90. 3-4 ft \$1.60

COMPASS CHERRY—It thrives most locations. The juicy red cherries make good jelly or sauce. The trees are thrifty and profuse abundance of fruit every year. A pollinizer for Oka and Sapa.

## Northstar Pie Cherry

The following is taken from an article by Prof. T. S. Weir in the *Minnesota Horticulturist* (January 1951) when the official announcement of Northstar was made.

"THE NORTHSTAR is a Morello type sour or pie cherry. The color is at first a bright red, but at maturity it changes to a dark glistening mahogany-red; the skin is medium tender and the flesh is juicy, tender and meaty; the flavor is pleasantly acid and the quality good. The stone is small and is easily removed.

"The ripening season begins very early; about July 5 to 10 at the Fruit Breeding Farm (a few miles west of Minneapolis) The fruit will remain on the tree in good condition for about two weeks.

"The tree is small but productive and is self-fertile. It is resistant to leaf spot and apparently to brown rot diseases.

EMBER (83)—A large late yellow plum with red blush. Exceptional fine dessert and canning qualities. Hangs to tree long and keeps 2 or 3 weeks after picked.

FEIBING PRIZE—Dark red firm fruit of excellent canning quality. Semi-freestone; extra large, about 2½ inches through.

LACRESENT—High quality sweet yellow plum. Delicious for eating fresh or canning.

Kaga. Although this variety is recommended as a pollinizer it is well worth growing for its fruit. The red fruit is below medium in size. The quality is good for eating and cooking. Tree is hardy and productive

KAHINTA—A large firm dark red plum with yellow flesh and of high quality. Freestone.

MONITOR—A late mid-season variety with a vigorous well-shaped tree producing large red firm-fleshed fruit of high quality.

Red Glow A really good large red plum Ripens after mid-August.

NO. 218—Pipestone Extra large luscious light red fruit of excellent quality

Redcoat  
NO. 17—Rather long Italian prune shape. Entirely freestone and dark red. Similar but better than Red Wing. Mid-season.

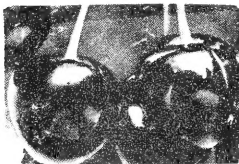
SUPERIOR—Considered by many the best plum in its season; mid-season. Large, beautiful red, firm flesh, exceptional quality.

TONKA—An extremely productive variety producing large round red fruit of very firm flesh and good quality.

UNDERWOOD—The most widely planted Minn. plum. Large bright red freestone fruit is produced annually in good quantities. Good all-around plum.

## NEW MT. ROYAL BLUE PLUM

One of the outstanding real blue plums that are hardy here



## METEOR CHERRY

University of Minnesota introduced Minn. No. 66 under the name of Meteor.

In introducing Meteor, they have the following to say in describing their new Cherry. "The tree is a strong and vigorous grower with an upright, moderately spreading habit. The unusually large leaves produce a dense and luxuriant foliage that is resistant to leaf spot. The fruit is large to very large. The fruit color is a very attractive clear light red; the skin is thin and tender. The flavor is a pleasant mild acid and quality is very good. The stone is small, long oval, and very free. The fruit ripens about 10 days to 2 weeks later than Northstar, or about midseason in relation to standard varieties of Sour Cherries.

The supply is very limited.

4 to 6 ft. Heavy trees ea. \$3.50

4 to 6 ft. heavy trees Each..... \$3.50

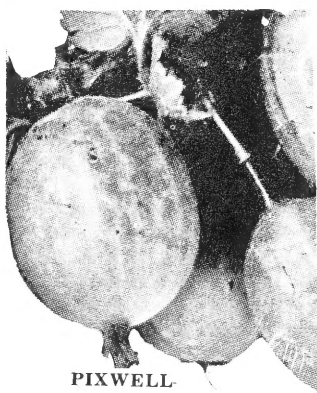
## CURRENTS SMALL FRUITS

- RED LAKE CURRANT**- Minn. introduction. Large fine red berries in large clusters.....\$ .60 EACH 10 or More \$ Each .50
- CASCADE** -Minn.No. 70- The Cascade begins to ripen about a week earlier than Red Lake... .65 .55
- VIKING**- A new red var. immune from Blister Rust . . . . . 880 .75
- WHITE GRAPE**- Sweet white type... .50 .40

## PIXWELL GOOSEBERRY

No. Dak. introduction. High quality and easily picked. A large oval light green fruit turning pink. 2 yr.heavy 80¢ 10 or more plants ea.@.. 70¢

WHEN ORDERING CURRANTS AND Gooseberries, please allow us time to secure a shipping permit when needed. Give the County, Township, and Sec. no. if possible.



PIXWELL

## NEW MINNESOTA HARDY GRAPES

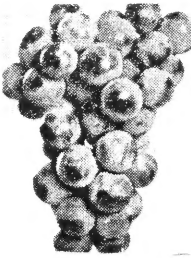
- BLUE BELL #158**-Goodsweet grape for eating.Vigorous and productive hardy type.
- Blue Jay.** The Minnesota Fruit Breeding Farm originated this hardy and vigorous variety. The blue-black berries are borne in medium to large sized clusters and are very good for juice and jelly. It should be planted with another variety to obtain the best yields.
- Moonbeam.** This "white" Grape with a mild and sweet flavor is borne in medium sized clusters, but the berries are large. It is an excellent ornamental variety because the clean, attractive leaves are dark green above and silvery beneath.
- Red Amber.** This very productive, amber-red variety was originated at the Minnesota Fruit Breeding Farm. The sweetest and most highly flavored of the hardy Grapes. Quality very good for cooking and eating.

## ASPARAGUS 2 yr. old. Doz., \$1.20; 25, \$1.95; 100, \$4.75

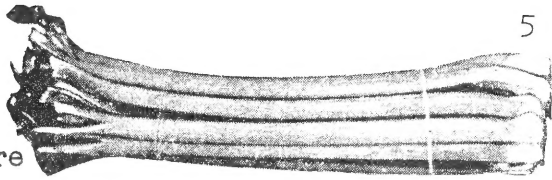
**PARADISE.** One of the newer varieties, very similar in appearance to the Washington. Is highly rust-resistant and a heavier producer. Grows a larger crop a full year earlier.

# GRAPES

- No. 45—red grape
- No. 66—green grape
- No. 69—blue grape
- No. 158—blue grape



Blue Jay.



## RED RHUBARB CHIPMAN'S

Extremely large stalks that are red bottom to top, even the flesh is red. It does not lose rich color in cooking. Skin is so tender you need not peel it. Juicy and sweet

**RUBY RED**—Another Canadian variety. The stalk is deep red inside as well as the skin. Can be cooked with skin on. Makes rich red sauce. Mix with strawberries for a grand combination.

## VALENTINE Mildest and Sweetest

Introduced from Canada newest and best of the red rhubarbs. It is sweetest of all, requiring the least sugar. Makes delicious pies and a smooth, tender, bright red sauce. Combines rich flavor, high quality and vigorous growth. Excellent for home use and freezing.

## RHUBARB PRICES

	1-4 Each	5-9 Each	10 Up Each
Chipman's Canada Red	\$.75	.65	.50
CALIFORNIA SWEET	.30	.25	.20
McDonald	.65	.60	.55
RUBY RED—	.50	.40	.35
Valentine	1.00	.90	.80

4/28/53 Navarino, Wisconsin  
Received my Blue Berry plants. They look very good. C.L.

## STANDARD GRAPES

- Beta.** It is vigorous and hardy; well suited to the north central states. The blue-black Grapes are fine for jelly and juice.
- Concord.** Most widely grown Grape in the United States. The berries are blue-black, sweet and borne in large clusters.
- FREDONIA** — New early blue-black grape. Juicy, solid, tender and good quality.

## FREDONIA PRICES OF GRAPES

	Each	Per 5
Beta, Concord		
2 year heavy	\$.50	\$2.00
Red Amber, Moonbeam, Blue Jay, Blue Bell heavy	\$1.00	\$4.25

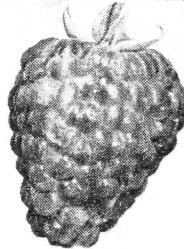
# Raspberries Strawberries

## PRICES OF RED RASPBERRIES

		Strong plants, No. 1)			
		12	25	50	100
2 year heavy					
Chief	...	\$1.85	\$3.50	\$6.50	\$11.00
Latham	..	1.85	3.50	6.50	11.00
3-year heavy		2.45	\$4.50	\$8.50	\$14.00
1-year heavy			\$2.45	\$4.50	\$8.50
Indian <sup>and</sup> NEWBURGH					
Summer	..	2.00	3.85	7.25	13.00
SODUS	-----	3.45	6.55	12.35	-----
<b>BLACK RASPBERRY</b>					
Cumberland		12	25	50	100
2-yr. heavy	..	\$2.25	\$4.00	\$7.50	\$14.00

## RASPBERRIES

- RED LATHAM—The most popular red raspberry in the U.S. today. Firm large size.
- CHIEF—Latham seedling that starts bearing about July 5th here. Good for highest market prices. Fruit is firm, juicy, medium sweet, round medium size and high quality.
- SODUS—New purple cap. Good size, flavor, quality, and yield. Hardy.
- NEWBURGH—Large firm and rather dry texture which makes it a good commercial variety. Holds color well, even though ripe for few days. Season same as Latham.
- INDIAN SUMMER—Everbearing Raspberry. Large round-conical berries. Medium red, rather soft, quality good. Not firm.
- CUMBERLAND—Black cap. Medium size of fine flavor, especially for jams. Prolific.



## Strawberries Prepaid to 3rd Zone

		Per 12				
		25	50	100	250	
<b>JUNE BEARING</b>						
Sen. Dunlap	.....	\$1.10	\$1.65	\$2.75	\$5.25	
Premier	.....	1.15	1.95	3.00	5.95	
JUMBO (Trade Mark)	....	2.25	3.50	6.25	10.95	
<b>EVER BEARING</b>						
Scarlet Gem	....	1.50	2.50	4.50	9.50	
Superfection	..	1.75	3.00	5.50	12.50	
Red Rich (plants)	2.95	5.00	8.50	15.00	....	
Red Rich (potted)	3.75	....	12.50	....	....	
Wayzata (Potted)	2.40	....	8.00	15.00	....	

## JUNE BEARING

**SENATOR DUNLAP**—Berries medium to large; conical dark crimson with red flesh. Most hardy. The most popular canning variety.

**PREMIER**—Large, juicy, red fruit and dependable producer. Early.

**JUMBO (Trade Mark) (Midseason)**—Our choice for the All American June bearing. Jumbo has everything—everything the home gardener and commercial grower demand in an all-purpose strawberry. It is deep red all the way through and choc'-'full of real honey-sweet goodness. Berries are firm and solid for shipping and handling. In actual freezing tests Jumbo rated superior and records prove that it is one of the heaviest yielding strawberries known. Chances are—Jumbo will soon be your favorite.

ONLY GENUINE IN THIS  
CARTON



PAT. No 993

## EVER BEARING

Red Rich is big, solid and firm all the way through. It ripens evenly and possesses an abundance of natural sugar. Ideal for freezing—and best of all it won't mush up when thawed. Don't lose a year with this amazing Strawberry. Plant this spring.

## STRAWBERRIES

Prices Above

**SCARLET GEM**—Does best of any around here. It sets abundance of new plants the first summer which fruit until frost. Good size and color; rich fine flavor.

**WAYZATA**—Fruit is bright red and quality high. Large thrifty plants with abundance of berries. A commercial money-maker.

## SUPERFECTION

Newest everbearer from Michigan. A vigorous grower producing large, sweet berries. Good producer of uniformly large fruit. Well liked by those who have it.

**Planting Time.** Planting from April 25th to May 15th is best for the Northwest.

**Setting Plants.** Upon arrival dip roots into liquid mud and keep them moist, never expose to sunlight or wind. To set plants for the old matted row system, plant in rows 3 to 3½ feet apart, 12 to 15 inches apart in row. Then runners are allowed to form dense beds or rows. A better way is to plant 2 feet apart each way; first trim ends of roots slightly, spread them out fan-shape and drop each plant into the space made by forcing a spade straight down into the earth. Then work up the ear around plant and settle firmly, so crown is a trifle lower than the surface, but not covered. Water each plant.

**General Care.** Pinch off blossoms the first year, keep beds weed-free and well cultivated. Train runners around parent plant like spokes of a wheel. Thus plants develop evenly and yield well. After ground freezes, cover with 4 to 6 inches of straw.



# Flowering Shrubs

## BEST HEDGING AND SNOWCATCHES

**ALPINE CURRANT** — Grows 6 ft. high. Most ideal shrubs for hedge trimmed one foot high or so, or as border hedge. Small green leaves.

**BARBERRY Japanese Green Leaf**—Grows 4-5 ft. high. Dark green leaves, red winter berries; thorny branches. Beautiful fall foliage color.

**BARBERRY RED LEAF** — Grows 3-4 ft. high. Bright maroon foliage all summer, bright red in fall; red berries all winter. An important contrast foliage plant.

**BUCKTHORN Common (Catharticus)** Grows 10-12 ft. A sturdy hedge for the north. Thick glossy green leaves, black berries for birds, prickly branches stop intruders.

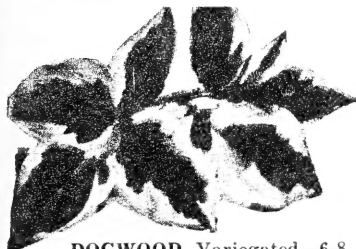
**CARAGANA Arborescens (Siberian Pea Tree)** Drought resistant, rabbit-proof hedge or windbreak plant. Yellow sweet pea-shaped flowers in May followed by pea pods. Plant 10 to 12 inches apart as hedge; 3 feet as screen or snow-catch.

**CARAGANA Pigmea (Good dwarf hedge)** 3-5 feet. Light green prickly foliage; prickly branches. Showy golden yellow flowers in May. Slow growing; saves trimming.

**COTONEASTER Peking (acutifolia)** Grows 10-12 ft. high. The best hardy hedge for the north. Soft and easy to trim; makes a square hedge thick to the ground. Shiny dark green leaves with bright fall coloring. Small pink flowers and showy black berries for the birds.

**CRANBERRY** — High bush (*Viburnum opulus*) Grows 8-10 ft. A native shrub with white flowers in May followed by scarlet berries hanging until picked. Makes perfect jelly.

**DOGWOOD Red Barked** — 8-12 feet. White flowers and white berries. Plant for winter effect.

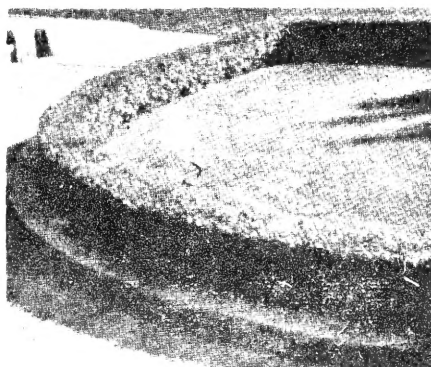
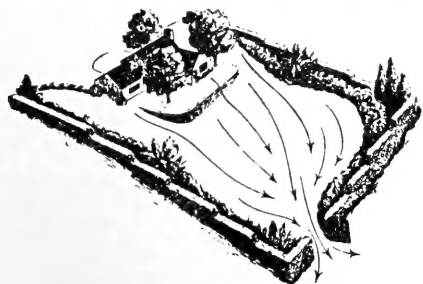


Variegated Dogwood

**DOGWOOD Variegated**—6-8 feet. Each leaf has silver edging. Showy red bark in winter.

**ELDER Golden**—6 ft. Rapid growing shrub with golden leaves for summer contrast.

**CONTROL YOUR CLIMATE** — Proper planting of hedges, trees and vines can change the temperature of your home 20° to 30° both summer and winter.



**ALPINE CURRANT HEDGE** An ideal hedge 1 to 1½ feet high. Can be grown 3 feet high if desired. Cotoneaster and Pigmy Caragana make similar hedging.

## LILACS

**LILAC Persian purple** — 8-10 ft. Does not sucker from the root. Handsome foliage, lilac flowers.

**LILAC Chinese Red Persian (Rothomagensis)** This is an outstanding reddish lilac that surpasses regular Persian in color. Foliage and characteristics the same.

## LILACS, FRENCH HYBRIDS

**LILAC French Hybrids** — Grow 12-15 ft. high. No lilacs give such variety of color. There is no danger of suckers

**ALPHONSE LAVALLE.** A double blue One of the best.

**BELLE DE NANCY**—Double—Pink.

**CHAS. JOLY**—Double purple.

**CHAS. X**—Red purple, single. One of best.

**MADAME LEMOINE**—Good double white.

**PRES. GREVY**—Very double lilac blue

**MICHAEL BUCHNER**—Double—Pink

## MOCKORANGE, MINNESOTA SNOWFLAKE

Large clusters of white flowers with golden stamens. Bloom freely in June and July, and occasionally thereafter. Attains a height of 5 to 6 ft. at maturity. Does well in sun or part shade. Single flowers on 1-year wood and double flowers on 2-year wood. [Supply your own "bridal bouquets" with this wonderful shrub

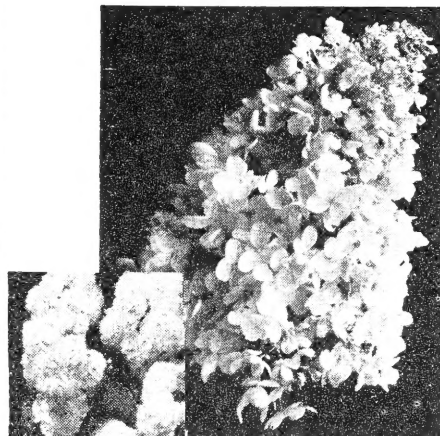
**MOCK ORANGE Virginal** 6-8 ft. A medium grower with masses of double and semi-double fragrant white flowers in June and periodically all summer and fall. A great shrub for the right place.

**MAY DAY TREE** — See Prunus.

**MAPLE GINNALI (Amur maple)** 18-25 ft. Interesting maple leaves with bright fall colors. Yellow flowers and attractive red seed pods. Good background shrub.

SHRUB PRICES Page 9

## HYDRANGEA



Hydrangea A.G.

Hydrangea P. G.

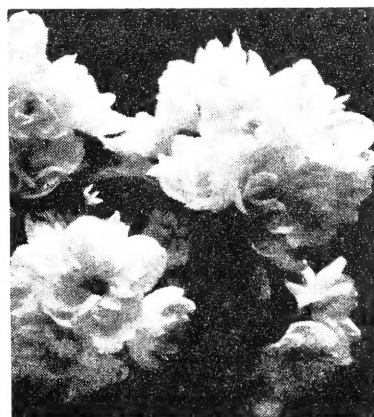
**HYDRANGEA PeeGee**—4-6 ft. Large trusses of showy white flowers blending into pink and bronze shades in autumn. Flowers July to Oct. Everlasting if cut fresh and dried.

**HYDRANGEA ARBORESENS (Snowhill)** — 3-5 ft. A real hardy shrub with very large white flower corymbs in July. Does well in partial shade.

## ZABELI HONEYSUCKLE

— The Beautiful Red Honeysuckle. Very compact, erect, well-formed bush maturing to 7 feet. Produces beautiful red flowers which are followed by brilliant red fruits in late summer. Very hardy.

**HONEYSUCKLE TARTARIAN** — 10-12 ft. Color varies from light pink, rose to red. Does well under all soil conditions. Fast grower. Deep pink, orange berries.



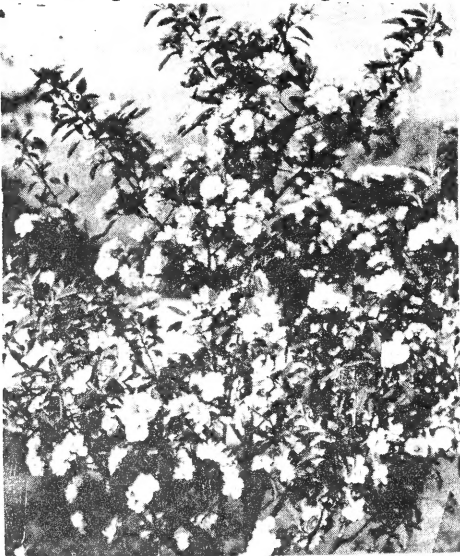
Double Mockorange

## FLOWERING LANDSCAPE SHRUBS

**NINEBARK Dwarf** (*Physocarpus opulifolia nana*) 4-5 ft. White flowers followed by red seed pods. Dark green leaves; valuable dwarf shrub for the north.

**NINEBARK Golden** (*Spirea aurea*) 8-10 ft. Contrast shrub. Golden leaves with white flower corymbs May-June, followed by attractive red seed pods. Very showy.

**POTENTILLA Fruticosa-** (2') Goldrop or Cinquefoil-New, dwarf shrub with yellow flowers most of summer. See shrub prices next page.



Rose Tree of China

**PRUNUS TRILOBA** (Flowering Plum or Almond) 8-10 ft. Handsome shrub or small tree that surpasses all shrubs in beauty of bloom. Double rose flowers along the stems in May.

➤ **PRUNUS Cistena** (Hanson's Purple Leaved Plum) 5-6 ft. Bushy shrub with rich purple foliage all summer.

➤ **PRUNUS May Day Tree** (Virginiana hybrid) A tall shrub-tree with long fragrant white flower panicles, black berries.

**SIBERIAN ALMOND**—( **PRUNUS** ), 3 feet. A hardy shrub covered with bright pink flowers before anything else is in bloom in May. Try it.

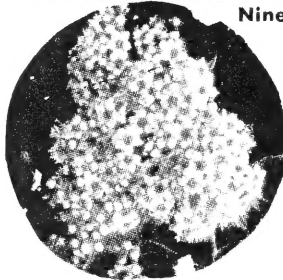
## BUSH CHERRY

➤ **Nanking** (*Prunus Tomentosa*). The small, bright red fruits are borne in abundance along the branches.

The protrusion of pink flowers and brightly colored fruit make this Cherry an attractive ornamental shrub. The bushes reach a height of 5 to 7 feet.



Ninebark



SPIREA Anthony Waterer



SPIREA VAN HOUTTEI

**RUSSIAN OLIVE** (*Eleagnus Angustifolia*) 12-18 ft. Silver leaves and white coated berries. Use as hedge, windbreak, snow-catch or background landscape shrub for backyard



Blooming Tamarix

**TAMARIX**—*Hespida* (Silver sprays) 6-10 ft. Feathery silver foliage; bright pink flowers in June-July.

## SPIREAS

**SPIREA Arguta** (Snow Garland) 5-6 ft. Pure white flowers along upper stems one week before common Van Houtte. Graceful, fine foliage.

**SPIREA Anthony Waterer** — 2-3 ft. high. Red flower heads from June to September.

**SPIREA Ash Leaved** (*Sorbaria Sorbifolia*) 5-6 ft. Grows in shady places. Earliest to leaf out with bright foliage. White flower spikes in later June. Suckers.

**SPIREA Billardi**—5-6 feet. Pink flowers in spikes July-August, again in fall. Give plenty water.

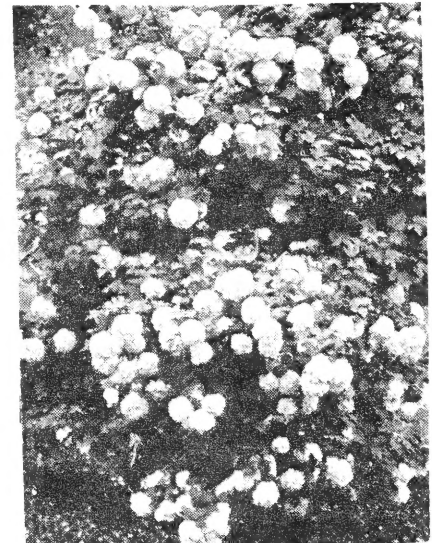
**SPIREA Froebel**—3-4 feet. Pink flower heads in June-July. Hardy vigorous grower. Similar to above variety.

**GOLDEN SPIREA**—See Ninebark

**SPIREA Thunbergi** (Fernleaf) 4-6 ft. Early white blooming with Arguta. Very soft looking shrub.

**SPIREA VAN HOUTTEI** (Common white called BRIDAL WREATH) Grows 6-7 feet high. One of most graceful shrubs grown. Covered by white flowers in June with branches hanging to the ground.

**SUMAC** (Native) Bright fall coloring.



**SNOWBALL** (*Viburnum opulis sterilis*) 8-10 feet. Large double round white flowers in June or May.

**VIBURNUM Lantana** (Wayfaring tree) 10-15 ft. Upright growing shrub with thick dark green leaves that hang on late. White flowers in corymbs followed by red berries, ripening black.

**WAHOO** *Euonymus* (6') A grey barked shrub with showy fruit like Bittersweet.



# SHRUBS

## ★ HARDY HEDGES

50 at the 100 Rate

	Each	Per 3	10	100
ALPINE CURRANT				
*9-12 in. ....	\$.70	\$1.80	\$5.50	\$50.00
ALMOND See Prunus				
BARBERRY, Red Leaf-				
*12-18 in. ....	.50	1.45	4.50	40.00
15-18 in. shrub.	1.00	2.70	8.50	80.00
BARBERRY, Green Leaf-				
*12-15 in. ....	.35	1.00	2.75	24.50
*15-18 in. shrub.	.60	1.50	4.50	40.00
BUCKTHORN Common-				
*12-18 in. S. ....	.75	1.75	15.00	
*18-24 in. T. ....	.90	2.50	22.00	
* 2-3 ft. T. ....	1.20	3.00	28.00	
CARAGANA Arboresens-				
(Siberian Pea Shrub)				
*12-18 in. ....	....	1.00	6.00	
*18-24 in. ....	....	1.25	9.00	
* 2-3 ft. ....	....	.60	1.50	12.00
Caragana Pigmaea Dwf.				
*12-18 in. ....	1.00	2.70	7.50	65.00
COTONEASTER Peking-				
*12-18 in. ....	.40	1.00	3.00	28.00
2-3 ft. ....	1.00	2.40	7.50	.....
CRANBERRY, High Bush Am.				
12-18 in. ....	.75	2.00	6.50	.....
2-3 ft. ....	1.25	3.50	....	.....
DOGWOOD Baileyi Red-				
*18-24 in. ....	.50	1.35	4.00	35.00
2-3 ft. ....	1.00	2.70	8.50	.....
DOGWOOD Variegated-				
18-24 in. ....	1.25	3.70	11.00	.....
GOLDEN ELDER-				
2-3 ft. ....	.90	2.40	....	.....
HONEYSUCKLE Zabel Red-				
*12-18 in. ....	....	.75	2.25	20.00
*18-24 in. ....	.50	1.35	3.50	30.00
18-24 in. T. ....	.75	2.10	6.50	60.00
2-3 ft. ...	1.00	1.		
2-3 ft. ...	1.00	2.85	9.00	.....
3-4 ft. ...	1.25	3.70	12.00	.....
HAZELNUT -Edible-				
18-24 in. ....	1.35	3.75	12.00	.....

50 at 100 Rate) EACH Per 3 Per 10  
HYDRANGEA, P.G. or Arbor.

18-24 in. ....	\$1.25	\$3.60	\$11.50
LILAC Persian -			
*12-18 in. ....	.40	1.00	3.00
LILAC Chinese Red (Rothomagensis)			
12-18 in. ....	.70	2.00	6.50
18-24 in. ....	.95	2.70	8.00
2-3 ft. ....	1.25	3.60	11.00
3-4 ft. ....	1.50	4.20	14.00
LILAC French Hybrids			
Varieties Page 7			
2-3 ft. ....	1.75	4.80	15.00
LILAC Canadian Hybrids (Villosa			
Types) Asst. shades	4.		
2-3 ft. (1. of Each)	4.00	....	
MAY DAY TREE (Prunus padus)			
2-3 ft. ....	1.25	3.60	11.50
MAPLE Ginnali (Amur)			
*12-18 in. ....	.50	1.35	3.50
18-24 in. ....	.75	2.00	6.00
MOCKORANGE Virginal-			
2-3 ft. ...	1.00	2.70	8.00
MOCKORANGE Minn. Snowflake-			
2-3 ft. ...	1.50	3.75	12.50
3-4 ft. ...	2.00	5.00	17.50
NINEBARK Green Dwarf-			
2-3 ft. ...	1.00	2.70	8.50
NINEBARK Golden-			
2-3 ft. ...	1.25	3.00	9.50
POTENTILLA Fruticosa (Goldrop)			
Cinquefoil-15"	.85	2.25	7.00
18-24 in. ..	1.00	2.90	9.00
PRUNUS Cistena-Purple Plum-			
2-3 ft. ...	1.60	4.50	14.00
PRUNUS Padus (May Day Tree (Shrub)			
2-3 ft. ....	1.25	3.60	11.50
PRUNUS Newport-			
2-3 ft. ....	1.60	4.50	14.00
PRUNUS Triloba (Dbl. Fl. Plum)			
2-3 ft. ...	1.60	4.50	14.00
PRUNUS Tomentosa (Nanking Cherry)			
2-3 ft. ....	1.50	4.00	12.50
SIBERIAN ALMOND (Dwarf Prunus)			
12-18 in. ...	1.00	2.70	8.00

Continued next page.

# Shrubs

EACH Per 3 Per 10

SNOWBALL ( <i>Viburnum opulus sterilis</i> )			
12-18 in. ....	\$.50	\$ 1.40	\$ 4.00
18-24 in. ....	1.00	2.90	9.00
SNOWBERRY Red or White-			
18-24 in. ....	.75	2.10	6.50
SPIREA FAMILY-			
Ant. Water. 1-1½'	.75	2.00	6.50
Billardi 2-3'	.85	2.25	7.00
Golden (see Ninebark)			
Thunbergi 2-3'	1.00	2.70	8.50
VanHouttie (Bridal Wreath)			
*12-18 in. Hedge. .35	1.00	2.50	
(\$20.00 per 100)			
18-24 in. ....	.50	1.25	4.00
2-3 ft. ....	.75	2.00	6.50
3-4 ft. ....	1.00	2.90	9.00
Ash Leaved ( <i>Sorbaria</i> )			
2-3 ft. ....	1.00	2.70	8.50
SUMAC Cut Leaf-			
2-3ft. ....	1.00	2.70	8.50
SUMAC Common-			
2-3 ft. ....	.75	2.00	....
TAMARIX Pink Hespida-			
2-3 ft. ....	.90	2.40	....
WAHOO <i>Euonymus</i> -			
12-18 in. ....	.75	2.25	....
18-24 in. ....	1.25	3.50	11.00
WAYFARING TREE ( <i>Viburnum lantana</i> )			
12-18 in. ....	.50	1.40	4.00

# WINDBREAK TREES

50-trees @ 100 Rate	Per 10	25	100	500
AMERICAN ELM, ASH,				
1-1½ ft. ....	\$.50	\$.90	\$4.00	\$13.00
1½-2 ft. ....	.75	1.25	5.00	18.00
2-3 ft. ....	1.50	2.00	6.00	24.00
SIBERIAN ELM (3 size above &)				
3-4 ft. Trpls. ....	2.00	4.50	12.50	....
4-5 ft. Trpls. ....	5.00	10.00	35.00	....
HARBIN ELM (Manchurian)				
1-1½ ft. Trpls. ....	1.50	3.00	10.00	....
1½-2 ft. Each. 30¢.	2.00	4.00	12.50	....
2-3 ft. Trpls. 65¢.	6.00	12.50	45.00	....
BOXELDER -				
1-1½ ft. ....	.75	1.30	4.50	20.00
1½-2 ft. ....	1.00	2.00	6.00	25.00
2-3 ft. ....	1.50	2.50	7.50	....
COTTONWOOD-				
2-3 ft. Trpls. ....	.75	1.50	3.50	15.00
CARAGANA Page 9				
SOFT (Silver) MAPLE-				
1½-2 ft. ....	1.50	2.50	7.50	35.00
2-3 ft. ....	2.00	4.00	12.50	50.00
POPLAR Norway-Cuttings...	....	....	1.00	....
2-3 ft. Trees. ....	1.50	2.50	9.00	....
4-5 ft. Trpls. ....	5.00	10.00	25.00	....
WILLOW Golden or Laurel Leaf-				
Cuttings. ....	....	....	1.00	....
2-3 ft. trees. ....	1.50	2.50	8.00	....
RUSSIAN OLIVE-				
1½-2 ft. 1. ....	2.50	5.00	10.00	....
2-3 ft. ....	3.00	6.00	12.50	50.00

STANDARD SHELTER BELT PLAN  
(Recommended by the University of Minnesota)  
MODEL FARM WINDBREAK

Rows 1 and 2. Siberian Pea Tree, Russian Olive, Honeysuckle, Laurel Leaf Willow, Arborvitae or Juniper.

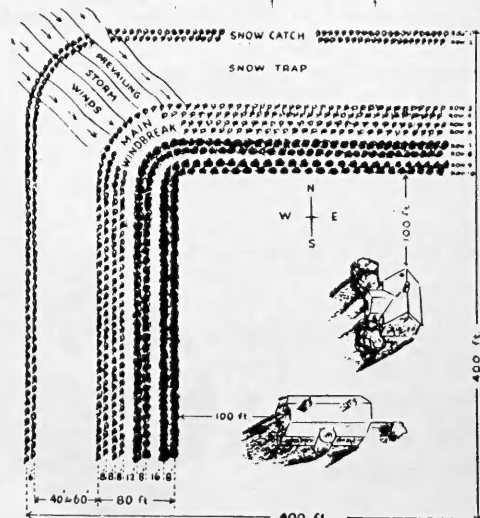
Rows 3 and 5. Niobe Willow, Golden Willow, Lombardy Poplar, or Chinese Elm.

Rows 4 and 6. Green Ash, American Elm or Silver Maple.

Rows 7 and 8. Ponderosa Pine, Jack Pine, Norway Pine or White Pine.

Rows 9 and 10. Colorado Blue Spruce, Black Hills Spruce, Norway Spruce, White Spruce, Douglas Fir, Arborvitae or Juniper.

All trees and shrubs planted in the shelter belt should be staggered to fill up the gaps and thereby to more effectively check the wind. The spacing between rows is shown in the plan. These distances may be extended by 2 to 4 feet in the main windbreak (rows 3 to 10) if space is available. The trees or shrubs used in the snow catch (rows 1 and 2) should be planted 4 feet apart in the row; all other trees should be planted 6 feet apart in the row. The trees in rows 3 and 5 may be cut for fuel or posts whenever they begin to crowd the more hardy, long-lived trees in rows 4 and 6.



# SHADE and ORNAMENTAL TREES

11

PRICES; Windbreak Sizes Page 10. Shade Sizes Page 12

## The Maples

### THE ELMS

**AMERICAN ELM**—60 to 100 ft. This native tree is dependable anywhere in the north as windbreak tree, boulevard, or lawn tree.

**CHINESE ELM** (*Ulmus pumila*) Grows 40-50 feet. Our Siberian strain is of the best for this climate. The fastest growing for windbreak, woodlot, hedge, or shade tree. Does well trimmed as hedge or ornament.

**HARBIN SIBERIAN ELM.** This is an extremely hardy selection of the Siberian Elm, grown from seed which came from far north in Asia and selected in Manitoba. It has proven to be absolutely hardy under all conditions and to possess all other good qualities of the Siberian Elm.

### The Birches

**BIRCH American White**—30 to 40 feet high. A beautiful shapely white barked tree.

**BIRCH Cut Leaf Weeping**—Grows 30-40 ft. high. Graceful white barked tree with finely cut leaves and branches drooping to the ground.

**BASSWOOD** (*American Linden*) 60-90 feet. Large round glossy leaves, smooth straight trunk.

**BLACK WALNUT** (*juglans nigra*) 80-100 ft. Makes a stately tree. Edible nuts and valuable wood.

**NORTHERN COTTONWOOD**—Grows to an enormous size quickly. Called the sudden SAWLOG.

**GREEN ASH**—Grows 50-60 feet. Drought resistant, hardy vigorous grower. Fine shade tree.

**HACKBERRY**—50 to 75 ft. A hardy dependable lawn or windbreak tree. Similar to the elm. Straight handsome trunk, beautiful round head.

**HONEY LOCUST Thornless**—50-60 feet. Attractive exotic foliage (pinnate leaves); fra-

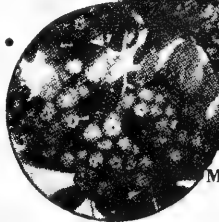
**HORSE CHESTNUT** (*Ohio Buckeye*) 30-40 ft. Rather round head. White flower clusters in June and attractive nuts. 5 leaves in a whorl.

**LARCH, European**—Grows in conical shape like spruce; 40-50 feet high. Needles drop in fall. Very graceful habit.

**MOUNTAIN ASH European**—20-40 ft. White flower heads followed by orange-red berries for fall and winter ornament. Handsome lawn tree.

Buxton, N. Dak.

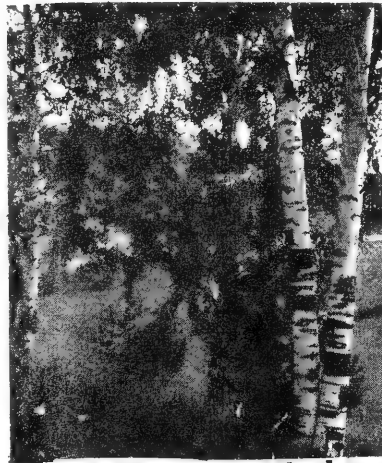
I ordered trees from you a few years ago & I had very good luck with them- A.M.B



MOUNTAIN ASH European



Cut-Leaf Weeping Birch



American Birch



### Crimson King Pat.

A brilliant new tree is the **Crimson King Maple**, originated in Europe. It is brilliant coloring all through the season.

**MAPLE SCHWEDLERI**—30-60 ft. Similar to hard maple but leaves come out blood red in spring. Dark rich green during the summer.

**MAPLE Rubrum** Very popular because of its pleasing and familiar dome-shaped head densely covered with beautiful dark green foliage. Lovely autumn foliage of rich **Scarlet** hangs on the tree 2 weeks.

**HARD OR SUGAR MAPLE**—50-75 feet. Makes a symmetrical thick head. Bright autumn leaves.

**MAPLE GINNALI**  
see shrubs.

**SOFT MAPLE** (*Acer dasycarpum*) 60-80 ft. Silver maple. Grey smooth bark; leaves green above, silver beneath. Fast growing windbreak and lawn tree. One of most beautiful shade trees.

**MAPLE, Box Elder, Negundo.** 40-50 ft Hardy, rapid growing tree with bright green foliage

**OAK, RED** *Quercus palustris.* 70-80 ft. Of rapid growth. Leaves deeply cut and colors beautiful in autumn.

### The Poplars

**POPLAR Bolleana**—50-60 ft. Rapid growing columnar tree; silvery foliage underneath and shiny green above. Grey-green bark.

**POPLAR LOMBARDY**—60-80 feet. A very rapid growing columnar tree with green leaves.

**NORWAY POPLARS**—75-100 ft. One of fastest growing hardy trees for windbreak or lake cottage planting.

**POPLAR, SILVER-LEAVED.** Smooth light bark, leaves dark green on top, silvery white beneath. Hardy and a rapid grower.

### The Willows

**WILLOWS Golden and Laurel Leaf**—30-40 ft. Fast growing snow-catch and windbreak. Yellow bark on golden and green bark on L. Leaf.

**WILLOW NIOBE GOLDEN WEeping**—Grows 30-40 ft. high. A fast growing graceful weeping tree. Long shiny leaves, golden bark.

May 25, 1953 Aitkin, Minn.  
xxxboth orders have arrived  
in fine shape. 2nd letter  
May 28- xtrees came thru in  
fine shape. F.C.K

# TREES

AMERICAN ELM -	EACH	Per 10
3 to 4 ft.....	\$.35	\$2.50
4 - 5 ft.....	.75	7.00
5 - 6 ft.....	1.50	12.50
6 - 8 ft.....	2.50	22.00
8 - 10 ft.....	3.50	33.00
1½ in.caliper..	7.75	75.00
2 in.caliper..	9.75	95.00
2½ in.caliper..	10.50	100.00

NEW HARBIN ELM-	EACH	Per 10
12-18 in.....	.25	1.50
18-24 in.....	.30	2.00
2-3 ft.....	.65	5.00

SIBERIAN ELM- Same as Am.Elm 3 to 6' only.

GREEN ASH-	EACH	Per 10
4-5 ft.....	.60	5.00
5-6 ft.....	1.50	12.50
6-8 ft.....	2.00	.....

BASSWOOD (Am.Linden)	EACH	Per 10
18-24 in.....	.25	2.25
6-8 ft.....	4.00	.....
8-10 ft.....	6.00	.....

BIRCH- Cut Leaf Weeping-	EACH	Per 10
3-4 ft.....	2.85	.....
4-5 ft.....	3.60	.....
5-6 ft.....	5.00	.....
6-8 ft.....	6.75	.....

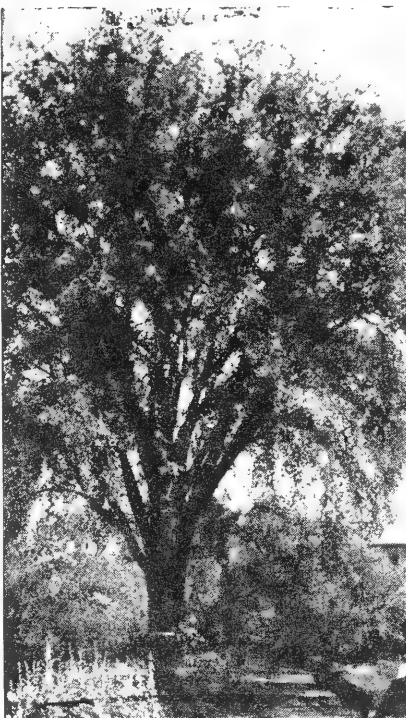
BIRCH American White-	EACH	Per 3	Per 10
18-24 in.	\$.35	\$1.00	\$ 2.80
2-3 ft.	.60	1.60	5.00
4-5 ft.	1.85	5.00	16.50
5-6 ft.	2.25	6.40	20.00

BLACK WALNUT	EACH	Per 10
2-3 ft.....	\$.80	\$ 7.50
3-4 ft.....	1.00	9.00

(Large sizes on hand)

HACKBERRY-	EACH	Per 10
5-6 ft.....	2.25	21.00
6-8 ft.....	3.75	36.00

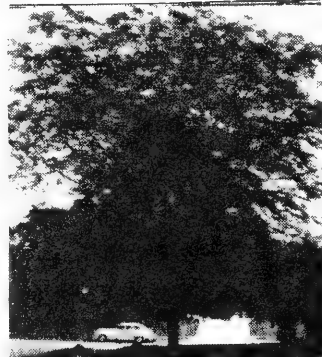
HONEYLOCUST Thornless	EACH	Per 10
2-3 ft.....	.40	2.50
3-4 ft.....	.55	5.00
4-5 ft.....	1.00	8.50



ELM, American



New Crimson King Maple



HORSECHESTNUT (Ohio Buckeye)	EACH	Per 10
3-4 ft.....	\$1.50	\$12.50
4-5 ft.....	2.00	18.00
5-6 ft.....	3.00	29.00

MOUNTAIN ASH (European)	EACH	Per 10
1½-2 ft.....	.35	3.00
2-3 ft.....	.75	7.00
3-4 ft.....	1.00	9.00
4-5 ft.....	1.75	15.00
5-6 ft.....	2.50	23.00
6-8 ft.....	3.75	.....

LARCH European-	EACH	Per 10
18-24 in....	1.00	8.50

## THE MAPLES

CRIMSON KING (pat.# 735)-	EACH	Per 10
5-6 ft. ....	4.95	45.00
6-8 ft.....	6.50	60.00

NEGUNDO See Windbreak-	EACH	Per 10
GINNALI See Shrubs-		
SCHWEDLERI Branched-		
5-6 ft.Heavy	2.50	24.00
6-8 ft. "	4.00	35.00
8-10ft. "	7.50	.....

SUGAR or HARD MAPLE-Norway.	EACH	Per 10
1½-2 ft.....	.40	3.00
2-3 ft.....	.50	4.50
5-6 ft.....	3.00	28.00
SOFT or SILVER MAPLE-Trees		
under 4ft. see Windbreak.		
4-5 ft.....	.75	7.00
5-6 ft.....	1.50	13.50
6-8 ft.....	2.50	23.00

RUBRUM or RED MAPLE-	EACH	Per 10
1½-2 ft.....	.50	3.50
3-4 ft.....	.75	7.00

## RED OAK

RUBRUM-Red Fall leaves.	EACH	Per 10
2-3 ft...	.80	7.80

Inquire larger sizes.

Minneapolis, Minn. May 1, 1953  
 Just wanted to tell you the trees came and they are such nice ones, and we are so pleased with them all.  
 Mrs. F.H.

**THE POPLARS**

**BOLLEANA - EACH Per 10**  
 3-4 ft....\$ .85 \$ 7.50  
 Inquire for other sizes.

**LOMBARDY-**  
 3-4 ft... .40 2.50  
 4-5 ft.... .75 6.50  
 6-8 ft.... 1.50 12.50  
 8-10 ft... 2.00 19.00

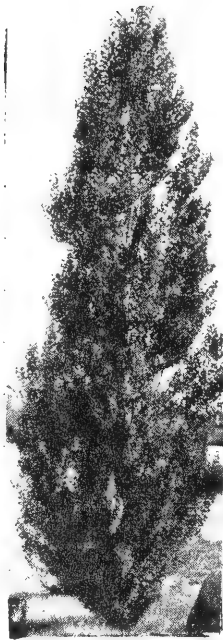
**NORWAY (Sudden saw log)**  
 See Windbreak Trees-

**SILVER POPLAR-**  
 4-5 ft.... 1.25 10.00

**THE WILLOWS**

**NIobe WEeping Golden Bark**  
 3-4 ft.... .50 3.50  
 4-5 ft.... .75 7.00  
 5-6 ft.... 1.50 12.50  
 6-8 ft.... 2.50 22.50  
 8-10ft.... 3.75 .....

**GOLDEN & LAUREL LEAF-See**  
 Windbreak Trees.

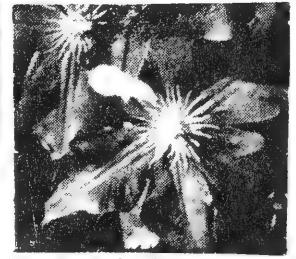


Lombardy Poplar

**CLEMATIS VINES**



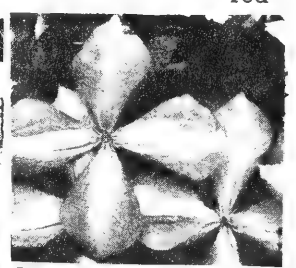
HENRYU—white



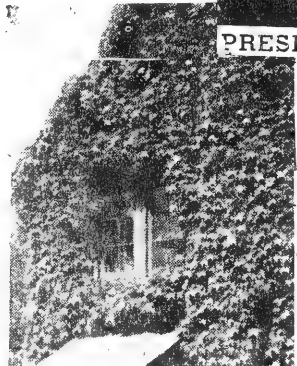
MME. EDOUARD ANDRE.—red



PRESIDENT—blue



JACKMANNI—purple



**PRICES OF Clematis, Each \$1.25;**

- CLEMATIS (Large flowering Jackmanni)—Large rich purple flowers all summer. Plant on south or east exposure.
- BARON VEILARD-Lav. pink.
- Mme Edw. ANDRE- Red.....
- HENRYI- White.....
- THE PRESIDENT-Deep Blue.
- RAMONA-Clear Blue.....
- ERECTA-SMALL hardy white.

**VINES** 75¢ each; 3 for ...\$1.95

**AMERICAN IVY** Virginia creeper—Fastest growing vine for twining on trellises, screen porches, or fences. Fall foliage coloring. Each, **50c**

**ENGLEMAN CREEPER** (Ampelopsis englemanni) Sticks to stone, stucco, brick without aid. 5 whorl leaves with autumn coloring. Each, **50c**

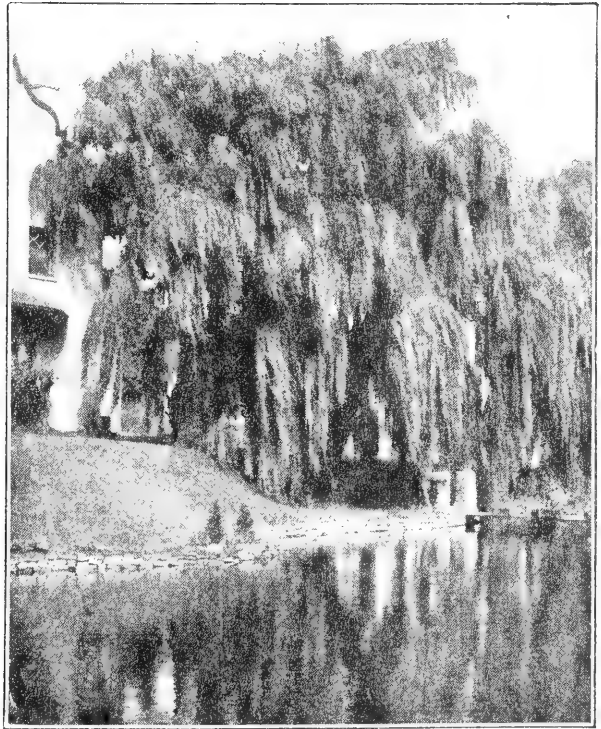
**BITTERSWEET**—Native twining plant with orange berries; red inside. Fine for winter decoration. **\$0.75**

**Ivy, Boston** The small overlapping leaves are held close to the wall to form a tight screen. The dark green leaves turn a fine shade of red in autumn. **\$1.00**

**SCARLET TRUMPET HONEYSUCKLE** -- (New everblooming variety) Trumpets of flame-red outside and golden yellow inside. Very fragrant. Each, **\$1.00**



TRUMPET HONEYSUCKLE



Niobe Weeping Willow

# EVERGREENS

PRICES OF EVERGREENS (Includes Balling and Burlapping)

12-15' 15-18' 1 1/2'-2' 2-2 1/2' 2 1/2'-3' 3-3 1/2' 3 1/2'-4' 4-5'

ARBORVITAE	12-15'	15-18'	1 1/2'-2'	2-2 1/2'	2 1/2'-3'	3-3 1/2'	3 1/2'-4'	4-5'
American..\$...	\$4.50	\$5.50	\$.....	\$.....	\$.....	\$.....	\$.....	\$.....
Globe ....3.00	4.50	6.50	.....	.....	.....	.....	.....	.....
Pyramidal.2.50	3.50	4.50	6.00	7.50	9.50	12.50	15.00	
Siberian..2.50	4.50	6.50	8.50	10.00	.....	.....	.....	
<b>JUNIPER</b>								
Dundee... ..	.....	.....	.....	11.00	12.50	13.50	.....	
Andorra.. 2.50	.....	.....	9.00	.....	.....	.....	.....	
Communis. ....	.....	8.00	.....	.....	.....	.....	.....	
Nevins Blue...	.....	.....	.....	.....	12.50	14.00	.....	
Pfitzer.. ...	.....	9.00	.....	.....	.....	.....	.....	
Red Cedar ...	4.50	.....	7.00	8.50	10.00	12.50	14.00	
Savin.....5.00	6.00	7.50	9.00	.....	.....	.....	.....	
<b>Silver</b>								
Moffetti ....	.....	.....	.....	.....	12.50	.....	.....	
Pathfinder ..	.....	.....	.....	.....	12.50	14.00	.....	
<b>PINE</b>								
Mugho 7.50	9.50	.....	.....	.....	.....	.....	.....	
Norway ....	.....	.....	.....	5.50	.....	.....	.....	
<b>SPRUCE</b>								
Black Hill ...	4.00	5.00	7.50	9.00	12.00	14.00	17.50	
Colorado Blue	7.00	9.00	11.00	13.50	15.00	19.50	.....	
<b>JAPANESE YEW-</b>								
Spreading 3.50	.....	15.00	.....	.....	.....	.....	.....	
Upright.. ....	.....	.....	.....	.....	22.00	.....	.....	



Colorado Blue Spruce

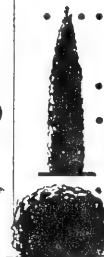
## HOW TO PLANT EVERGREENS

Dig a hole a foot wider and deeper than the ball of earth. Fill under and around ball with fertile top soil.

Set tree in hole slightly lower than it stood in the nursery.

Do not remove the burlap.

Fill top soil around the ball and pack firmly or settle by filling hole with water.



## Letter

Vernon Center-6/1/53

The plants have arrived in very good condition and most of them have made new growth. Was well pleased with the evergreens. Mrs. A.K

## SHELTER BELT EVERGREENS

PRICES OF SHELTER BELT EVERGREENS

(Sdgs.) Indicates Seedlings

(Trans.) Indicates Transplants-

## Grow Your Own Ornamental Evergreens

Prices of Evergreens for the Home Gardener

(These Evergreens are Heavy Field Grow)

ARBORVITAE:	Each	Per 10
American .... 12-18"	\$1.00	\$ 9.00
Globe .... 9-12"	1.00	9.00
Pyramidal ... 12-18"	1.50	
Siberian .... 9-12"	1.00	9.00
<b>JUNIPER:</b>		
Red Cedar ... 12-18"	\$1.50	13.50
Savin .... 12-18"	1.50	13.50
<b>PINE:</b>		
Norway .... 12-18"	1.00	9.00
Ponderosa ... 9-12"	.75	7.00
Mugho .... 8-10"	1.00	9.00
<b>SPRUCE:</b>		
Black Hills .. 9-12"	1.00	9.00
Colorado .... 9-12"	1.00	9.00

ARBORVITAE,	10	25	100
<b>AMERICAN</b>			
Sdgs. 6-8 in. ....		2.50	9.00
Trans. 9-12 in. ....	4.00	9.50	35.00
Trans. 12-18 in. ....	6.00	14.25	53.50
<b>JUNIPER, RED CEDAR</b>			
Trans. 6-9 in. ....	2.25	5.25	20.00
Trans. 9-12 in. ....	3.00	6.75	25.00
Trans. 12-18 in. ....	7.75	18.50	
<b>PINE, NORWAY</b>			
Trans. 6-9 in. ....	2.25	5.50	20.00
Trans. 9-12 in. ....	3.00	6.75	25.00
Trans. 12-18 in. ....	4.25	9.50	35.00
Trans. 18-24 in. ....	9.75	23.20	
<b>PINE, PONDEROSA</b>			
<b>SCOTCH</b>			
Trans. 6-9 in. ....	2.25	5.50	20.00
Trans. 9-12 in. ....	3.00	6.75	25.00
<b>SPRUCE, BLACK HILLS</b>			
Sdgs. 4-6 in. ....	1.80	2.70	9.75
Trans. 6-9 in. ....	3.00	6.95	24.95
Trans. 9-12 in. ....	5.75	13.75	52.50
Trans. 12-18 in. ....			
<b>SPRUCE, COLORADO BLUE</b>			
Sdgs. 4-6 in. ....	2.30	2.75	10.00
Trans. 6-9 in. ....	4.50	9.75	35.00



Grow your own Evergreens from Trees like these

# ARBORVITAE

**AMERICAN ARBOR VITAE**—Grows 20-30 ft. high. Bright green flat foliage all winter and summer. Also can be trimmed as a hedge.

**Globe Arbor Vitae.** 2½-3 ft. Naturally globe shaped. Useful in formal work.

**ARBOR VITAE PYRAMIDAL** Grows 20-30 ft. if not kept trimmed. More narrow and upright than the American above and much more compact. The ideal tree under most conditions.

**SIBERIAN ARBOR VITAE**—Woodward Globe—Grows globe shape; a dark green flat foliage. Hardy. Trimmed round.

## JUNIPER



### DWARF AND BUSH JUNIPERS

**JUNIPER ANDORRA** (*Communis depressa plumosa*). 2-ft. Spreads outward over large area. Silver green changing to plum color in winter.

**JUNIPER PFITZER**—Similar to Savin but has blue-green prickly foliage. Very hard some.

**JUNIPER SAVIN**—Grows 2-3 ft. high and spreads out many feet. Can be trimmed. Best low Juniper for the north keeping good green color all year.

### PYRAMIDAL

**JUNIPER Virginiana** (Red Cedar) Should be trimmed at least once a year. Can be kept any height or shape by trimming. Used extensively in doorway plantings.

**JUNIPER Virginiana Pyramidiformis** (Dun-dee Juniper) Dark blue green during summer and plum purple during winter. Narrow form. Grafted trees in field.

**Pathfinder Juniper** (*Juniperus scopulorum*, Pathfinder). It is believed that this Evergreen has the most beautiful silvery blue coloring of all the varieties of the true Silver Juniper. The habit of growth is upright with a somewhat broader and more bushy base than is found in other varieties of the true Silver. The tips of the branches are of fine texture and tend to be upright in habit. It is hardy.

**Silver Juniper** (*Juniperus scopulorum*). This Juniper has the form of the Red Cedar, but it does not grow as large, and has attractive silvery foliage. It is the parent of such beautiful grafted Junipers as the Chandler Blue Juniper, Moffet Juniper, Pathfinder Juniper and Welch Juniper.

**Blue Juniper** (*Juniperus virginiana* NEVIN) It is an upright Evergreen with attractive blue foliage. The new growth on the tips. Like most Junipers can be trimmed

# SPRUCE

**BLACK HILL SPRUCE** (*canadensis albertiana*). 40-50 ft. Very compact bushy tree. Foliage varies from green to silver blue-green.

**COLORADO BLUE SPRUCE**—Grows 50-75 feet high. Colors vary from green through blue-green to silver blue. The front lawn spruce or Christmas decorating tree.

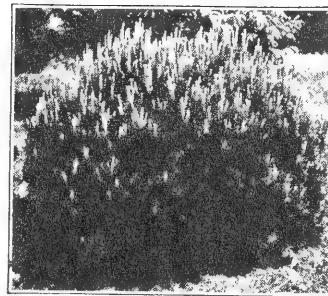
## PINE

**DWARF MUGHO PINE**—Should be trimmed every June; round or flat top. A hardy bright green bush for doorway planting.

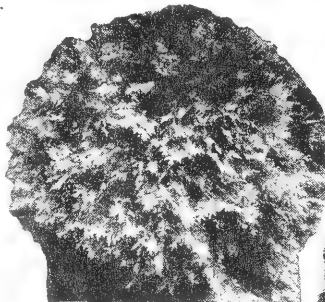
**SCOTCH PINE**—(*Pinus sylvestris*) 60-70 ft. One of fastest growing and hardiest drought resistant. Good windbreak or lawn tree.

**PONDEROSA BULL PINE** (Western Yellow pine). Long needles; dark green foliage. Drought resistant.

**Pine, Norway.** A very fast grower desirable for group planting.



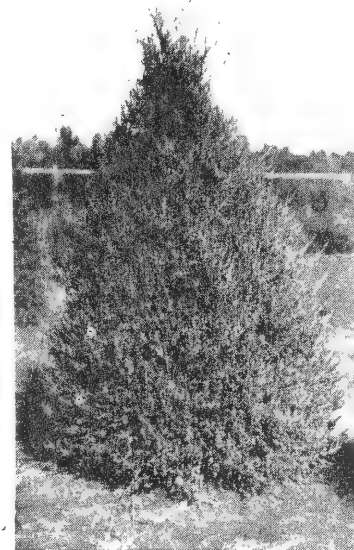
DWARF MUGHO PINE—



Globe Arborvitae



ARBOR VITAE PYRAMIDAL



JUNIPER VIRGINIANA



Savin Juniper



1—Am. Arbor-Vitae 2—Siberian Arbor-Vitae 3—Mugho Pine 4—Pyramidal Arbor-Vitae 5 and 6—Globe Arbor-Vitae 7—Savin Juniper 8—Mugho Pine 9—Mugho Pine

Sub-zero hybrid teas from hardier species that bloom all summer, of great sturdiness and vigor, to survive sub-zero winters. Outstanding in every way.

# SUB-ZERO

## Beautiful Brownell Roses

\$1.75 each; 3 for \$5.00.

**CEDRIC ADAMS.** A new beautiful sturdy, 1ge double scarlet to carmine rose. Named after the commentator.

### — CURLY PINK

Large, massed, two-toned pink blossoms. Very hardy.

### — DICK WILCOX

Magnificent deep red rose, grows 2 ft. or more in height.

### — LILY PONS

White with yellow center, large, graceful, free bloomer.

### — SHADES OF AUTUMN

Bi-colored. Beautiful red, yellow and blush flower.

### — V FOR VICTORY

Large, very double, yellow, fragrant, constant bloomer.

**Queen O' The Lakes.** Queen of Minnesota charming crimson queen of flowers. The queen Deep velvety of all the double reds.



# ROSES

Each \$1.25; 3 for \$3.15;  
Doz. \$12.50.



## NON-PATENTED HYBRID TEA ROSES

### Crimson Glory

A national favorite among red roses.

### Etoile de Hollande

One of the world's fine red roses.

### Picture

Perfect buds and flowers of warm pink.

### Pres. Herbert Hoover

Giant multicolor—pink, scarlet and yellow.

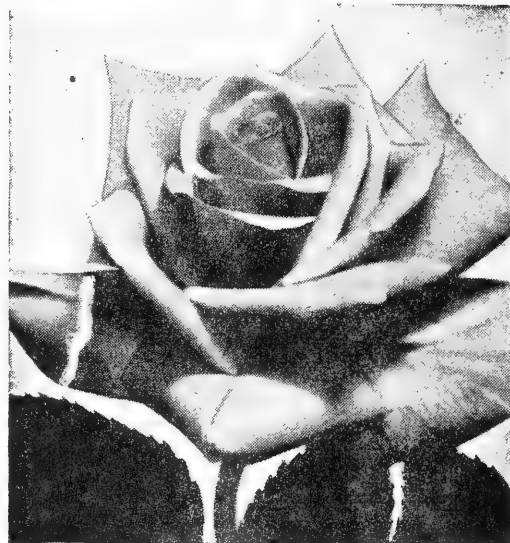
**Poinsettia**, one of the most brilliant red scarlet. Good grower and fine cut flower.

### Red Radiance

Just like Radiance, but cerise-red in color.

## PATENTED TEA ROSES

Require Winter Protection  
in the North



**Bravo** No. 983. \$2.25 each; 3 or more, \$2.00 each.

We have never seen a rose more brilliant than this sparkling cardinal red, nor have we seen one which holds color as it does—even when the sun is burning hot and most red varieties fade to an unattractive hue. Don't expect a great big plant and don't look for a lot of fragrance. But when the plump buds open to spectacular, big, broad flowers with wavy petals arranged in perfect symmetry, and with every flower glowing like a burning ember, you are certain to exclaim "Bravo!"

**Charlotte Armstrong**, Patent No. 455 (Retail \$2.25 ea.; 3 or more \$2.00 ea.) Brilliant blood-red buds on long slender stems opening to magnificent spectrum-red in cool weather, cerise in hot weather. A.A.R.S. award for 1941.

**Chrysler Imperial**, Patent No. 1167. (Retail \$2.75 each; 3 or more \$2.40 each.) In color, CHRYSLER IMPERIAL is unmatched by any other red rose, its vivid, rich tones of crimson are enhanced by darker overtones of glowing oxblood red, and the gem-like lustre of garnet in the folds retains its sparkling beauty. Long, tapering buds

**FORTY-NINER**, Patent No. 792. (Retail \$2.25 each.) Brilliantly hued bi-color. Inside of petals is a Orient-Red, while the outside is a Chrome-Yel changing to a Straw-Yellow.

**Fred Howard**, Patent No. 1006. (Retail \$2.50 ea.; 3 or more \$2.20 each.) Long, rich yellow buds are tipped with delicate penciling of light pink. Strong, hardy, fully branched; dark shiny foliage; grows high; long stems excellent for cutting; blooms from early spring to late fall. A.A.R.S. award for 1952.

**Helen Traubel**, Patent applied for. (Retail \$2.75 ea.; 3 or more \$2.40 each.) Named after one of the greatest of American Concert Artists. The color varies with the weather, sometimes a light sparkling pink, more often a luminous apricot. Its unusually large and long buds are magnificent and the half open flower and the glorious fully opened blooms display the lovely color in a more lavish way. Very vigorous grower. A.A.R.S. award for 1952.



## CHOICE ROSES

**Mojave**, Patent No. 1176. (Retail \$3.00 each; 3 or more \$2.65 each.) NEW A.A.R.S. Award Winner. A Charlotte Armstrong cross retaining many of the fine plant characteristics of its parents along with the slender bud of that variety. The color is a blend of salmon, apricot and orange, and occasionally in cool weather the salmon changes to red blended with the other two colors.

**NOCTURNE**. (Pat. 713) Large fragrant bright cardinal-crimson blooms. Richly textured petals of long lasting quality. A sturdy plant adapted to all climates. **Each \$2.00, 3 for \$5.25**

**PEACE**. (Pat. 591.) One of the best roses of all time! Huge golden yellow buds, etched pink, open cream yellow with petals deepening to apple-blossom pink. Vigorous grower. **Each \$2.50, 3 for \$6.60.**

**Tallyho**, Patent No. 828 (Retail \$2.00 ea; 3 or more \$1.75 ea.) A bright color but the contrast is not great. The color on the inside of the petals is a varying but always a delightful and unique shade of pink. The outside of the petals is a rich crimson. The buds, before they unfold, are deep cardinal-red.

**Lowell Thomas**, Pat No. 595 (Retail \$2.00 ea; 3 or more \$1.75 ea.) Bud large, long-pointed; flower large, very double (35 to 40 petals), high centered, lasting, clear canary-yellow, on strong stem.

**Rose of Freedom**, Pat 791. (Retail \$2.00 each; 3 or more \$1.75 each.) Winner CITY OF PORTLAND AWARD for 1947. A Hybrid Tea with beautiful 60 to 70 petaled, long-stemmed, currant-red blooms with delightful true Rose fragrance.

Anchorage, Alaska

Gentlemen:

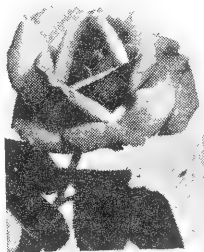
Some of my neighbors in this town have Roses blooming in their gardens which have lived outdoors several winters, and which they bought from your nurseries. I would like them myself—please send catalog.

Signed J.A.B.

Letter

New Ulm, Minn. Oct 17, 1953  
The Strawberry plants I bought from you this spring are just wonderful and we had a taste of them—extra fine xxxx O.S.

Wells, Minn. Rt.1 May 20, 1953  
I ordered Strawberry plants from you and they arrived in fine shape xxx and all are growing



Peace,

## Lovely Floribundas <sup>17</sup>

These super-polyantha roses are rapidly becoming popular and deservedly so. Hardier than hybrid teas and more resistant to disease, they are more free and persistent bloomers, many of the varieties are never without bloom throughout the season. Flowers come usually in clusters of large individual roses. Ideal for garden display and excellent for cutting.

**Ma Perkins**, Patent No. 1143. (Retail \$2.25 each; 3 or more \$2.00 each.) NEW 1953 A.A.R.S.

**WINNER**. This very free blooming Floribunda rose, with its sweetly pungent fragrance, shows a translucent light fashion color with shades of red in outer petals. A suffusion of yellow is present in all the early stages of bloom. With aging comes a soft coral shell pink.

**Embers \$2.25 each; 3 or more, \$2.00 each;**

Like Frolic, Embers is we predict an honored place among the Floribundas This one is a variety which grows fairly tall and its flowers are such a glowing, burning red that they outshine anything in the garden. Plant Pat. No. 1178.

## Climbing Roses

**Excelsa**, intense scarlet. large clusters of small flowers. **Each \$1.00**  
**Paul's Scarlet**, intense scarlet flowers of excellent shape and good size, borne in clusters. **\$1.00**  
**New Dawn**, EVERBLOOMING CLIMBING ROSE. Apple blossom pink flowers with old-rose fragrance. **\$1.45**

## RUGOSA HYBRIDS

2-yr No. 1 plants, \$1.25 each

HARDY MINNESOTA ROSES

Grow into landscape shrubs

**Austrian Copper**, single brilliant orange-red flowers inside and yellow outside.

↔ **AMELIA GRAVENEUX** Rugosa—Carmine red borne on long stems. One of best for the north.

**BELLE POITEVINE**—Really a pink Hansa.

**F. J. GROOTENDORST**—Small bright red double flowers all summer long. Grows 3 ft. high. Most beautiful.

**FRAU KARL DRUSCHKI** (Hybrid perpetual) Large snow white rose June until frost.

**HARRISON YELLOW**—Semi-double, moderately fragrant bright golden yellow flowers in June; grows 4-6 ft. high.

**HANSA**—Grows 5-6 ft. high. Double violet-red flowers in June periodically during the summer and again in autumn. Makes fine landscape shrub.

2-3 ft. shrubs, each ..... \$1.50



F. J. Grootendorst

**QUANTITY FLOWER PRICES WHEN THE EACH PRICE ONLY IS GIVEN, EXCEPT AS OTHERWISE MARKED.**

EACH	per 3	per 6	per 12
\$.25	\$.70	\$1.30	\$2.40
.30	.85	1.50	2.90
.35	1.00	1.80	3.50
.40	1.10	2.15	4.00
.50	1.40	2.70	5.00
.75	2.10	4.00	7.50

(C) Cut Flower

(RG) Rock Garden

**EXCEPT WHERE FLOWER VARIETIES ARE PRICED, ALL FLOWERING ROOTS ARE: 30¢ Each, 3 for 85¢; 6 for \$1.50 12 for \$2.90 PREPAID.**

We cannot prepay any flower order less than \$2.00. Add 25¢ for packing unless part of larger order.

**ACHILLEA** The Pearl (Ptarmica) Large double white flowers June-July. 15 inch.  
**ALYSSUM** Saxatile (Rock Madwort) (RG) Masses of bright yellow flowers like a basket of gold; silver foliage. 10-12 inches. Out for Decoration Day until July.

**ASTERS** (New Dwarf Varieties) (RG)  
 Countess of Dudley—pink flower, yellow eye.  
**NIOBE.** Pure white. 6 inch. September.....  
 Col. F. R. Dunham—rich blue, 18 inches.  
 Nancy—flesh pink, 9 inches.  
 Ronald—lilac pink, 9 inches.  
 Victor—pale lavender blue, 9 inches.  
 Barrs Pink—pink with yellow center. 4 ft.....  
 All, each, .....35¢

**BABY'S BREATH** (C) Common white. 2-3 feet. Each .....**.25**

**Bristol Fairy.** Large, double white grafted form: blooms all summer when cut. Each **.75**

**Bodgeri.** Dwarf, double flowering white that turns to light pink. ....**.60**

## Bleeding Hearts

**BLEEDING HEARTS** (*Dicentra spectabilis*) Old-fashioned Bleeding Heart. Red heart flower for Decoration Day. Each. **75c**  
 clumps .....**75c**

**Plumy Bleeding Heart** (*dicentra eximia*) (RG) Finely cut foliage, rosy heart flowers most of summer. Each .....**50c**

**BUTTERFLY BUSH** (*Buddleia*) (C) Perennial shrub growing 4-5 feet high. Lilac-purple flowers on long arching branches. All summer.

**75¢ each**



**Old Fashioned BLEEDING HEART**

**Plumy Type Plumy Bleeding Heart**

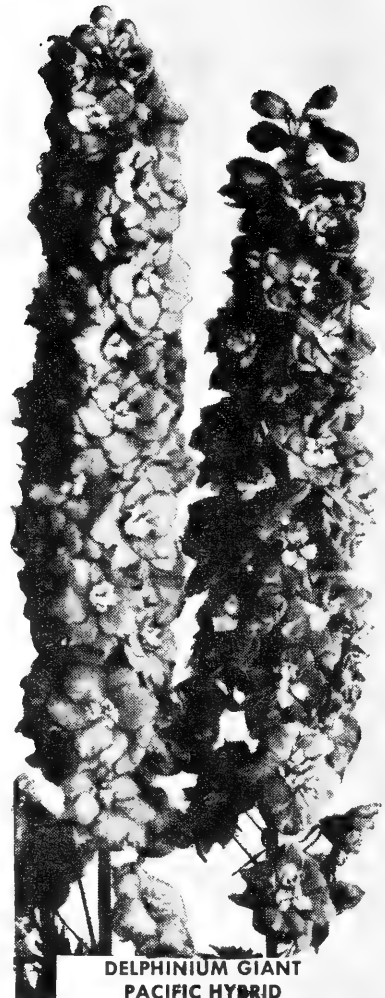
# Your Garden PERENNIALS

## Delphinium GIANT PACIFIC HYBRIDS

**BLACK NIGHT**—Darkest violet.  
**BLUE BIRD**—Med. blue, white bee.  
**BLUE JAY**—Dark blue, darker bee.  
**CAMELIARD**—Lavender, white bee.  
**GALAHAD**—Giant pure white.  
**GUINEVERE**—Lt. pink, white bee. **35¢**  
**KING ARTHUR**—Violet, white bee. **Each**  
**PERCIVAL**—Clear white, brown bee.  
**SUMMER SKIES**—Lt. blue, white bee.  
**ROUND TABLE**—Mixed colors.

See 35¢ Rate to the left .

**DELPHINIUM**—Gold Medal Hyb. Tall hardy variety. Colors ranging from powder blue to deep lav.-blue. 2 yr. old 3 for 50¢; 5 plants for 85¢ 15 Roots (mixed colors) **\$2.25 postpaid**



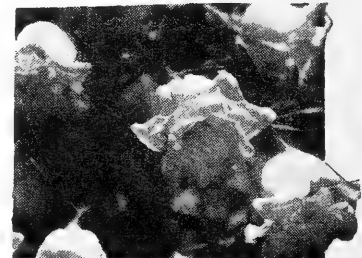
**DELPHINIUM GIANT PACIFIC HYBRID**

### BUTTERCUPS

**RANUNCULUS** (18") Very double, golden yellow fls. on straight stems June and July.

### CARNATION

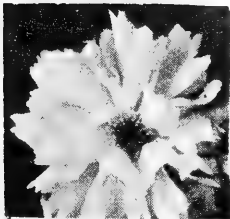
**GRENADINE** (15") (C) Double fragrant fls. Red, Rose, & Yellow.



**CANTERBURY BELLS**



**Hardy Carnations**



COREOPSIS Double



COREOPSIS

**COREOPSIS (C)** Good size, rich golden yellow daisy-like flowers all summer. 18-24 inches

**COREOPSIS Double Sunburst**—Double golden yellow flowers all summer long

**CANTERBURY BELLS** (Campanula medium) White, pink or purple flowers; double cup and saucer type

**COLUMBINE** (Aquilegia) **Crimson Star**—Bright crimson with white corolla. May-June

Mrs. Scott Elliott—Good long spurred mixture

## Daisies

**DOUBLE SHASTA DAISY**—(C) showy flowers; fringed and double.

**SHASTA DAISY Alaska**—(C)—Large white daisies blooming most of summer. One of the best medium height white perennials. 18 in.

**FALL DAISY** (Uliginosum) White daisy flowers July-Sept. 4-5 feet

**PAINTED DAISY** (Pyrethrum) (C) A hardy flower, fine cut foliage with white, pink, rose, or rich red flowers, or mixed. June-August

**FLOWERING FLAX** (Linum perenne) Blue flowers most of summer. 15-18 inch

**FLAX Yellow (12") Flavum**—Waxy yellow fls. June-July. Try it

## HARDY FERNS

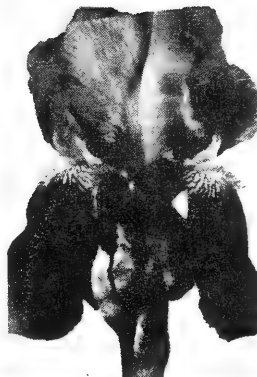
Plan now to plant these ferns that will fill in that shady nook, your wooded areas, north side exposures or shaded rock gardens. Hardy ferns are long lived and will last for years to come.



Osmunda Cinnamomea (Cinnamon Fern)

Maidenhair Fern—(Adiantum pedatum)—14 in.  
Cinnamon Fern—(Osmunda cinnamomea)—36 in.  
Ostrich Fern—(Pteretis nodulosa)—36 in.

30¢ each; 3 for .....85¢  
6 Roots Postpaid for \$1.50



## IRISES

If you cannot plant your Iris roots early in April it is better to have us ship them in July and August.

**BLUE MONARCH**—Violet blue.60

**CALIFORNIA GOLD**.Yellow.\$.40

**CHALLENGER**—Dark purple...40

**CLARA NOYES**—Orange-yel. .40

**DEPUTE NOBLOT**—Copper....50

**DR.C.H.MAYO**—Soft pink....60

**DAUNTLESS**—Velvety red....40

**ETHELWYN DUNBAR**—Orchid...65

**ELKARDT**—Chestnut brown...40

**ELMCHR**—Rich orchid.....75

**FRIVOLITE**—Nice pink.....65

**GOLDEN SPIKE**—Deep yellow.60

**GREAT LAKES**—Clear blue...75

**GERTRUDE**—Deep blue .....40

**GLEAM**—Pale self blue....45

**IRMA POLLOCK**—Purple-blue.75

**JAKE**—Large new white....60

**MRS. NOWLIN**—pink.....65

**NENE**—Huge purple bi-color.65

**OLA KOLA**—Richest yellow 1.00

**PINK OPAL**—Better pink.. .50

**RAMESES**—Russet pink.... .60

**RED DOUGLAS**—Red-brown.. .75

**REBELLIAN**—Blood red;deep.75

**RUTH DAVIS**—Silvery white1.00

**SABLE**—Black purple..\$.1.00

**SNOW FLURRY**—Ruffl.White1.00

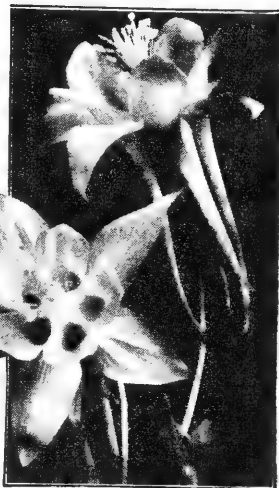
**S.Q.72**—Apple bl.pink.\$.2.00

**THURASHES**—Bluish purple .45

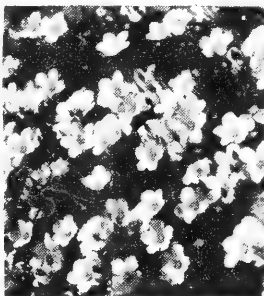
**SOUTHLAND**—Lemon yellow...75

**WABASH**—White & purple....50

**WAR EAGLE**—Deep red .....40



COLUMBINE (Aquilegia)



Blue Flax

## IRIS SPECIAL

10 CHOICE IRIS ROOTS  
OF THE BETTER VARIETIES  
(5 kinds in our choice) Postpaid \$2.50

## SIBERIAN IRIS

**CAESAR'S**—Purest blue....40

**SNOW QUEEN**—Purest white...40

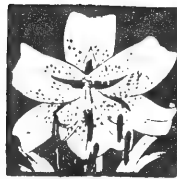
4 (2 each) Postpaid for \$1.25



Regal Lily



ELEGANS



# Lilies



- Variety (Grown Height) (Color) (Date-Bloom) PRICE
- CAROL LILY (15") Miniature Scarlet-June..\$ .25
  - ELEGANS (18") Upright cupped; orng-red; June .30
  - HENRYI (3') Rich apricot orange. August... .70
  - REGAL (4') Tall fragrant white. July..... .40
  - SPECIOSUM RUBRUM (3-4') White; pink dots; Spt.. .80
  - TIGER DOUBLE (3') Spotted orange red. Aug.. .35  
Also single.
  - LILY OF THE VALLEY (8") Ground cover; shade. .30
  - HEMEROCALLIS Day Lily (3') Orange-yel. June. .25
  - " FULVA (54") Deep red at center.. June. .50
  - " HYPERION (40") Soft yel. 7" fls. June. .75

FUNKIA, Plantain Lily (16") Wide light green leaves. Purple - flowers in July. (RG)

FORGET-ME-NOTS- (12" RG) Rich blue fls. Likes moisture.

GAS PLANTS (30") (C) Long lasting heavy fl. heads that are born above attractive shrub-like foliage during June and July. Pink or White. 50¢ each; 6 for \$2.70 prepaid

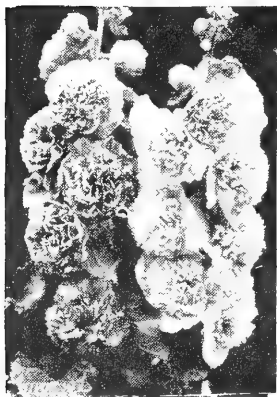
## LUPINE

RUSSELL'S (2-3') Blue, Red, White, or Yellow long flower spikes in mid-summer..... 30¢

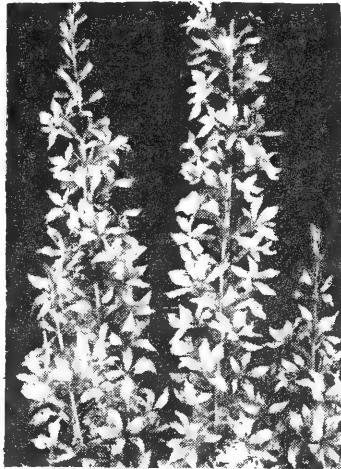
## LYTHRUM

MORDENS PINK (3') Pink flower sprays from the ground up June, July, August. A hardy flower from Canada. Good cut flower.. 50¢

L. DROP MORE PURPLE-Little deeper shade. 50¢



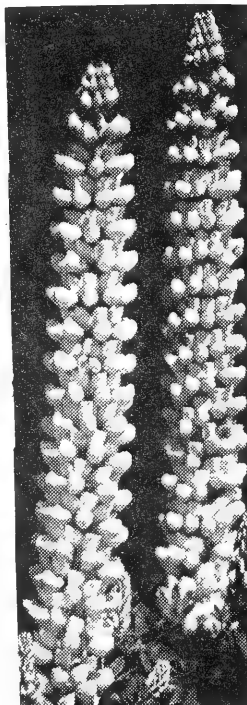
Double Hollyhocks



LYTHRUM  
Morden Pink

## MAYFLOWER

ANEMONE (Pasque Flower) (8-10") Native Crocus greets you early with lavender flowers blooming thru June. Each 25¢



Lupines

GAILLARDIA (Blanket flower) (C) For the middle of the flower border. Orange-yellow flowers all summer

GOLDEN GLOW—Double yellow golden flowers on 5-7 foot stems .....

HARDY ORNAMENTAL GRASSES (Variegated ribbon grass) (RG) Leaves longitudinally striped with white. Grows 1½ ft....

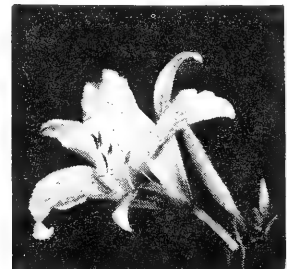
HEMEROCALLIS (See Lilies)

HEUCHERA Brizoides (Carolbell) (RG) Pink flowers in umbels on 15 inch stems Cut for winter bouquets. May-June .....

Heuchera Firelight—Bright red flowers. 35c.

HOLLYHOCKS Single mixed .....

HOLLYHOCKS Double Assorted. Scarlet, salmonrose, yellow, and maroon. Grow 3-5 feet .....



HEMEROCALLIS  
Day Lilies

# MINNESOTA MUMS

\*MINNESOTA CHRYSANTHEMUMS-Early blooming.  
(C) CUSHION-Low growing types 12-16"high.

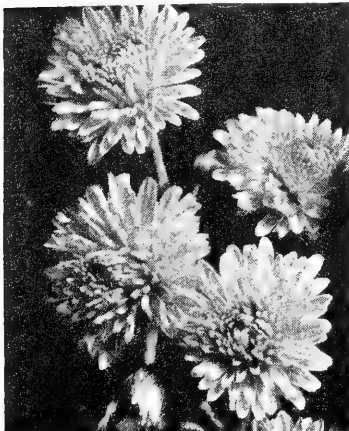
6 for \$2.15; 12 for \$4.00. Postpaid (40¢ ea.)

VARIETY	(Date of Bloom)	(Color)	EACH
AIGONQUIN-	Radiant early	yellow.....	\$ .40
*AVALANCHE-	Sept. 4; Large	full cream-white.	.40
AVALANCHE	YELLOW-Sept. 4;	Fine yellow...	.40
AUTUMN	BEAUTY-Sept. 4;	Reddish chestnut.	.60
*CHIPPEWA-	Sept. 4; Bright	aster purple..	.40
CHARLES	NYE-Sept. 24; 3"	fls. buttercup-yel..	.50
*DAHLIAMUM-	Aug. 20 (C) Bright	wine red...	.40
*DR. LONGLEY-	Aug. 20; Double	rose pink...	.50
*DULUTH-	Aug. 15 (C); Early	lemon chrome...	.40
EUGENE	WANDERER-Aug. 25	(C); Large yellow.	.40
*GLAZIER-	Aug. 22 (C) Earliest	best white.	.40
*MAROON 'N	GOLD-Aug. 25 (C);	Mahogany shaded	
ed maroon	with gold reverse.	Very early..	.40
*PIPESTONE-	Aug. 15 (C) Earliest	bronze....	.40
*PURPLE	STAR-Aug. 25; Dahlia	purple....	.40
*RED GOLD-	Aug. 22; Golden	orange-red.....	.40
*RED HAWK-	Dragon's Blood	red....	.40
*SILVER	PINK-Sept. 1; Silver	Tyrian rose... .40	
*VIOLET-	Aug. 25; (C); Deepest	double violet.	.40

## CUSHION MUMS

BY COLOR-Low pillow type growing plants that will make a bright spot in your yard this fall. RED, YELLOW, WHITE, ROSE+PINK, BRONZE.

6 for \$2.00; 12 for \$3.20 ..... Prepaid.



Large Mums

## Large Flowering Mums

You need Mums in your fall garden. These are all large-flowering varieties, in various colors such as pink, yellow, white and others. Colors our choice.

12 For \$4.00, Postpaid

# ORCHARD SPECIAL

The following apples and Plums can be secured in 3-4ft. sizes at a Special Price

Apple and Crab Trees. Plum & Cherry Trees.

Apples & Crabs Plums and Ch.

Fireside Apple Monitor Plum

Haralson Apple Red Glow Plum

Minjon Apple Underwood "

Yel. Transparent Pipestone "

Chestnut Crab Waneta Plum

Whitney Crab LaCrescent "

Beacon Apple Compass Cher.

Mordens Sapa

Cherry Plum

Your Choice of Apples & Crabs listed above (2 of each)

10 3-4ft. Trees only \$ 9.00  
Postpaid

Your Choice of Cherries and Plums listed above (2 of Each)

10 3-4 ft. Trees only \$10.50

PREPAID to 3rd P.P Zone Only.

14 3-4 ft. trees only \$13.50  
Apples and Crabs Postpaid

14 3-4 ft. trees only \$14.00  
Cherries & Plums Postpaid

28 3-4 ft. trees- \$26.75  
Half Apples Half Plums

24 3-4 ft. Trees \$23.00  
Half Apples Half Plums

When no flower prices appear after the description they are 30¢ each. See the Rates page 18.

# HARDY PHLOX

## CARE OF PHLOX

Water heavily during dry spells. The flowers should not be allowed to go to seed. Cut the first flower spikes when they are in full bloom and use for home decoration. Or, if left longer on the plant, they should be cut as soon as the blooms fade. In this way, a second setting of bloom will come on and thus the season will be prolonged. This plant likes a well enriched soil and a sunny location, well-drained position.

## Phlox Collection

White, 1 Pink All 6 Plants  
Purple 1 Two-Tone  
1 Blue **Only \$1.95, Prepaid**  
Red, 1 Blue  
PHLOX BY NAME (Labeled)

2 Yr. Old No. 1 Field Grown Plants 50¢  
1 or more of Each 6 for \$2.40 Prepaid  
3 or more of Each 12 for 3.75 Prepaid  
(12 all different not labeled) \$3.50.

AMERICAN BEAUTY—Large clear Rose Pink.  
BRIGHT EYES—Rose Pink; dark red eye.  
FLASH—Scarlet crimson.  
LEO SCHLAGETER—Most fiery red of all.  
LILLIAN—Cameo pink.

MARY LOUISE—Pure glistening white.  
PRIME MINISTER—White with crimson eye.  
PURPLEKRONE—Deep purple from Holland.  
RUBY LEE—Extra large plum red flowers.  
R.P. STRUTHERS—Rosy red; scarlet eye.  
ROYAL PURPLE—Shaded violet; deeper eye.  
SALMON GLOW—Flame pink with salmon.  
STARLIGHT—Lavender with white star.  
SPITFIRE—Salmon orange; crimson eye.  
WORLD PEACE—Pure white; large floret.

## PHLOX SUBULATA (Moss or Creeping Phlox)

These dwarf creeping Phlox are some of the first flowers to brighten the landscape in the spring. Because of their low growth, spreading habit, and vivid colors, they are especially fine for rock gardens, for terrace plantings, and for planting about the base of the stone in cemetery work. Height 4 to 6 inches.

Start blooming for Decoration Day.  
Grow about 6" high. RED, WHITE, PINK.  
50¢ each; 3 for \$1.40; 6 for \$2.50  
6 Prepaid for \$2.75; 12 for \$5.00

## Choice PEONIES

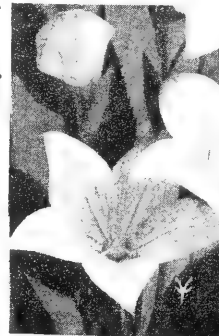
(E) Early (M) Midseason (L) Late  
(10) is Perfect Flower EACH

CHESTINE GOWDY (8.4) (L) Outer petals  
pink rimmed with cream with a  
splashing of red.... \$ .90  
FESTIVA MAXIMA (9.3) Best large white  
(E) with red splash in center.. 1.00  
LONGFELLOW (E.M) Double cherry red 1.25  
MARY BRAND (8.7) (M) Large red.... 1.25  
MYRTLE GENTRY (9.6) (L) Fragrant and  
double rose . Full rose form... 1.60  
NO. 105 (M) Double red fine form. 1.00  
RUBRA SUPERBA (7.2) (L) Deep brilliant  
crimson and a late bloomer... 1.00  
SARAH BERNHARDT (9.0) (M) Apple blossom  
pink tipped silver. Nice... 1.25  
WALTER FAXTON (9.3) (M) Vivid salmon  
pink ..... 1.25

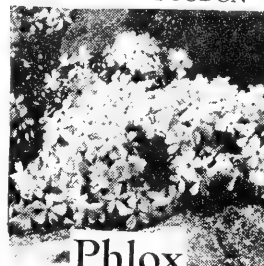
## Plant 3 PEONIES

OUR 1 1 1 2.75,  
CHOICE RED, PINK, WHITE Postpaid

Flower Prices; when no price is given after the description they are; 30¢ each; See Rates on Page 18



PLATYCODON



Phlox  
Creeping

POPPY Oriental — Large scarlet flowers  
May-June. Plant in early spring or August.

Poppy Oriental Mrs. Perry's Pink. Apricot-pink often called apricot-orange. Brown blotch on petals. Grows 29 inches .....

PHYSOSTEGIA (False Dragon Head)—(C) Spikes of flowers resembling tiny snapdragons rise above attractive foliage. Lavender-rose .....

PLATYCODON (Balloon flower) Blue flowers opening two inches across. June-July .....

PENTSTEMON Grandiflorus (Native Digitalis) (C) A hardy plant with silver-gray evergreen foliage. Beautiful lavender, bell, or gloxinia-shaped flowers in June. Fine cut flower. 1½ ft. ....

POPPY Oriental — Large scarlet flowers  
May-June. Plant in early spring or August.  
Each .....

SEMPERVIVUM (Houseleek, Hen and Chickens) (RG). Each, 20c; clumps ..... 35c

STATICE (Great Sea Lavender) (RG) Broad leathery leaves; large lavender flower heads. Ideal for cutting. Grows 18 inches high. 35c each;

SWEET WILLIAM (Dianthus barbatus)—Good assortment of red, pink, scarlet, and white. Bloom profusely.

# CANNAS

Cannas make the best showing when planted in beds by themselves. The soil should be well fertilized and worked up thoroughly to a depth of 10 to 12 inches. The bulbs can be set about 12 inches apart and about 4 to 6 inches deep. Mulchings with lawn cuttings will help retain the moisture. Start bulbs in pots indoors in March or April. Do not set out until all danger of frost is over; about June 1st here in the Northwest.

**City of Portland.** Large blooms in good-sized clusters, medium rose-pink, strong stems well above the green foliage. One of the best pinks.

**The President.** 4 ft. tall. Glowing scarlet, blue-green foliage. Extra large trusses of brilliant color. The finest Red Canna of today. The foliage is entirely free from disease.

**Yellow King Humbert.** 5 ft. tall. Deep rich yellow, heavily spotted and flecked with deep red. Green foliage.

**Red King Humbert.** 5 ft. tall. The grandest Canna ever offered, a king in reality. The heart-shaped leaves are purple-madder over-bronze. The plants are crowned with immense heads of orchid-like velvety orange-scarlet, rose-tinted and blossoms incomparably beautiful.

30¢ each. (12 for \$2.85 Prepaid)



Cannas

## Tuberous Rooted BEGONIAS



Start them indoors and then plant them outdoors when the danger of frost is over.

**CAMELLIA FLOWERING**  
Resembling a camellia, all colors

# Big-Beautiful!

## Tuberous Rooted BEGONIAS

23

(Double-Flowered Camellia Type)

Few flowers surpass for pure beauty these newly developed Tuberous Begonias. They have huge double blooms, closely resembling the lovely Camellia of Southern gardens; perfectly formed and carried on strong stems.

The best of all flowers for shady location. Perfect for planting on the north side of the house or under trees where few things do well.

Excellent for corsages and flower arrangements. Used for both summer bloom outdoors and potted plants during the winter.

### PRICES

Large, selected bulbs, 1½-2 inches in diameter; complete with directions.

All Prepaid	
3 for .... \$0.95	25 for .... \$5.00
6 for .... 1.65	50 for .... 8.50
12 for .... 2.85	100 for .... 13.95

### Your Choice of These 8 Colors

Copper	Salmon
Crimson,	Scarlet
Orange	White
Pink	Yellow



**BEGONIA. Tuberous Rooted.** This is perhaps the most beautiful and best plant to grow in shady places. They come in a marvelous range of colors, white, yellow, pink, salmon, red, orange, etc. Tuberous Begonias also make fine house plants. Soil must be light and the greater part composed of sand, leaf mold and peat. Do not water too much in starting bulbs. For outdoor planting do not set out until all danger of frost is over. Plant 1 ft. apart. Cultural leaflet on request.

**Double Camellia Flowered.** Without doubt is the most gorgeous tuberous rooted Begonia variety. Have all colors mentioned above.

## INSTRUCTIONS FOR PLANTING PEONIES



If you are ready to plant your Peonies when they arrive, wash off all packing material and drop the roots into water. Just before planting, remove the labels so the wire will not cut the roots. Dig a hole 2 feet in diameter and from 1 to 1½ feet deep. Place the Peony root in the hole so the eyes on the root are 2 inches below the level of the ground. It may be necessary to place more soil back into the hole in order not to have the eyes more than 2 inches below the level of the ground. Be sure the soil is tamped

### Tulips and Other Bulbs for Fall Planting

During September and October we offer genuine Holland Tulip, Hyacinth, Daffodil, Jonquil, Crocus, Snowdrops, Grape Hyacinth, Lilies, Dutch Iris and other bulbs. Please write or call for special list.

# GLADIOLI BULBS

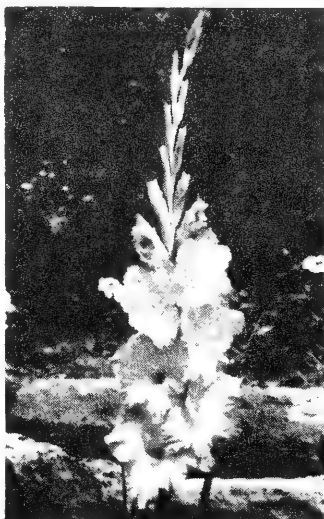
BEAUTIFUL COLORS • RIVALS OF THE RAINBOW

PRICE: Except when marked  
3 for 30¢; 12 for \$1.00

R- Ruffled Varieties

\*- Higher Priced as marked

- | VARIETY              | COLOR                       |
|----------------------|-----------------------------|
| Abu Hassan,          | dark violet blue.....       |
| Agitator,            | red.....                    |
| Arthusa,             | buff.....                   |
| Ballad,              | pink, yellow center.....    |
| R-Barcarole,         | orange.....                 |
| Beacon,              | red, yellow spot.....       |
| Black Opal,          | dark red.....               |
| Bit O'Heaven,        | orange.....                 |
| Boulogne,            | deep wine.....              |
| Bouton d'Or,         | deep yellow.....            |
| R-Burma,             | deep rose red, ruffled..... |
| Cardinal Spellman,   | red violet.....             |
| Commando,            | red.....                    |
| Duna,                | pinky buff.....             |
| R-Debutante,         | orange yellow, ruffled..... |
| R-Fair Angel,        | light creamy white.....     |
| Flaming Sword,       | red.....                    |
| Fire Brand,          | dark red.....               |
| R Golden Chimes,     | light yellow, ruffled.....  |
| General D. McArthur, | pink.....                   |
| Heavenly White,      | pale blue white.....        |
| Huntress,            | lavender.....               |
| Harry Hopkins,       | wine red.....               |
| Jeannie,             | salmon pink.....            |
| J. V. Konynenburg,   | orange red.....             |
| R King David,        | extra fine purple ruffled   |
| Each \$1.00; 3 for   | .....\$2.50                 |
| La Paloma,           | orange.....                 |
| Lavender Dream,      | lavender.....               |
| Lavender & Gold,     | lavender & gold.....        |
| R-Leading Lady,      | creamy white.....           |
| Miss Wisconsin,      | bright pink.....            |
| Mansoor,             | blood red.....              |
| Modern Times,        | crimson purple.....         |
| Margaret Fulton,     | coral pink.....             |
| Mrs. Lulu Hunt,      | rose pink.....              |
| *Orchid Giant,       | light violet. Ea. 25¢       |
| Picardy,             | salmon.....                 |
| *Pactolus,           | apricot cream, red spot 25¢ |
| Polynesie,           | salmon pink, yellow center  |
| R-Poets Dream,       | ruffled orchid Ea. 20¢      |
| Pride of Wanakah,    | deep rose.....              |
| Purple Heart,        | light purple.....           |
| Purple Supreme,      | dark purple.....            |



## SUPER GLADS

### Rainbow Collection

50 Bulbs, 5 Each of 10 Different Colors  
Large Bulbs, Unlabeled.

**\$3.50, Prepaid**

190 Bulbs, 10 Each of 10 Different Colors.  
Large Bulbs, Unlabeled.

**\$6.50, Prepaid**

(Glad)

### Bouquet Collection

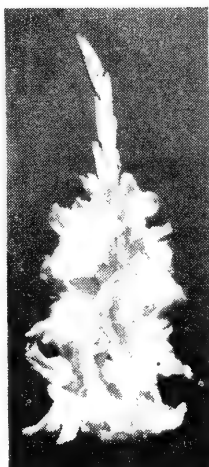
Labeled as to Color.

50 Bulbs Only ..... **\$3.85** Pre-paid

Yellow, Orange; Violet  
Blues; Reds, Pinks, Odds  
10 each of 5 colors.

## RUFFLED GLADS

There are 10 Ruffled Glads listed on this page with King David as one of them 10 for \$2.00 Postpaid.



- 2 of Each
- 20 for \$3.50 Postpaid
- 3 of Each
- 30 for \$4.50 Postpaid
- 6 of Each
- 60 for \$8.65 Postpaid

**CULTURE.** The gladiolus thrives in a sunny location. Grows in any good garden soil, but does much better when the latter has been enriched with a fertilizer. If the bulbs are planted at intervals from April to June the blooming period will extend from July until frost. A trench should be dug five inches deep and an inch of sand placed in the bottom to absorb surplus moisture. Set the bulbs 6 to 8 inches apart.

For earliest blossoms, draw 2 inches of soil over the bulbs at first, replacing the rest when the shoots appear. Keep free from weeds and give plenty of water, especially during the blooming period.

Before the ground freezes lift the bulbs. After the tops dry, they should be cut off, the bulbs separated and the small side growth or bulblets removed. The latter may be handled like the big bulbs. Then the bulbs are placed in cloth bags, Vermiculite or sand to prevent them from becoming too dry. Keep bulbs in a cool temperature.





BURCH FORAKER [1938 Slocum], I. D.

## 10 Dahlias

THE BEST VARIETIES WE COULD  
CHOOSE FOR YOU. Prepaid for  
ONLY **\$2.95**

All Glad & Dahlia Orders  
of \$3.00 or more combin-  
ed will be Postpaid.

## 6 DAHLIAS (6 Colors) . . . . . \$ 1.85

Our Selection from Varieties POSTPAID

- These are all Large Decorative (Postpaid)  
Types unless Marked (C-Cactus) Per 1 per 3
- ALICE MAY- Fine large white . . . . . \$ .75 \$1.90
  - AMELIA EARHART (C) Autumn shade . . 1.00 2.50
  - BETTY ZANE- Large pink favorite .50 1.35
  - BURCH FORAKER- Sulpher yellow over-  
cast scarlet. Good bloomer. Large . 1.00 2.50
  - CALIFORNIA IDOL- Fine light yellow .50 1.35
  - DADDY KEMP- Huge reddish purple . . .50 1.35
  - DETROITER- Finest rich dark red . .50 1.35
  - DR. TEVIS- Salmon pink; beauty . . .40 1.00
  - COL. LEWIS- Large dark pink . . . . .75 1.90
  - ELLINOR VANDERVEER- Bright rose . . .40 1.00
  - ETENARD DE LYON- (C) Lavender . . .40 1.00
  - GIRL OF HILLCREST- Golden buff . . .50 1.35
  - GLAMOUR- Huge purple . . . . .75 1.90
  - JANE COWL- Bronze, buff-salmon . . .40 1.00
  - INCANDESCENT- Bronzy yel.-pink . . .50 1.35
  - KEMP'S WHITE WONDER- Large white . .40 1.00
  - KEMP'S GLAMOURUS- Yellow & Pink . .1.00 2.50
  - KEMP'S GREAT EASTERN- Orange gold . .90 2.50
  - KEMP'S MONARCH- Reddish orange . .1.00 2.50
  - KING ALFRED<sup>2</sup>- Red; light reverse . . .50 1.35
  - LINK'S GORGEOUS- Yellow-pink . . . . .75 1.90
  - MAFFIE (CD) Large glowing red . . . .1.00 2.50
  - MARSHALL'S PINK- Light pink . . . . .40 1.00
  - MARGARET W. WILSON- White to pink .40 1.00
  - MRS. E. DE VER WARNER- Lav.-orchid .40 1.00
  - MRS. THOMAS A. EDISON- Red; lt. reverse .50 1.35
  - MONARCH OF THE EAST- Golden buff . .75 1.90
  - OSA HELEN (C) Huge Am. beauty red . .75 1.90
  - PREMIER'S WINSOME- Huge lt. pink .1.00 2.50
  - ROSE GLORY- Cut flower; lav. Rose . . .40 1.00
  - RED SUNSET- Bright red . . . . .50 1.35
  - THE COMMODORE- Large deep yellow . .50 1.35
  - THOMAS A. EDISON- Royal purple . . .50 1.35
  - Wm .G. WYLLIE- Yel. buff & pink . . . .50 1.35
  - ZANT'S PINK- Fine large dark pink .75 1.90
- 6 40¢ Roots (6 colors) Prepaid for \$1.85  
6 50¢ Roots (6 colors) Prepaid for 2.50  
6 75¢ Roots (6 colors) Prepaid for 3.50  
6 1.00 Roots (6 colors) Prepaid for 4.30



# VEGETABLE SEEDS

SEED PREPAID	Also in 10¢ Pkts	Oz.	1/4 lb.	lb.
BEANS- Navy or Great Northern....	\$.12	\$.45		
" Golden or Black Wax.....	.10	.15	.50	
BEETS- Detroit Dark Red.....	.20	.50	1.50	
CARROTS- Half long or Red Core...	.25	.60	2.00	
CABBAGE-Flat Dutch & Copenhagen..	.45	1.20	...	
CUCUMBER-Pickling or White Spink.	.20	.65	2.10	
CORN- Golden Bantam 72 day.Impr. ...	.20	.55		
" Golden Cross Bantam 85 day... ..	.25	.70		
" Popcorn, Japanese Hulless....	.20	.50		
LETTUCE- Early Curl Simpson&Head.	.25	.75	...	
MUSKMELLON-Golden & Honey Rock...	.25	.75	...	
ONIONS-Red or Yellow Globe Danvers.	.40	1.25	...	
ONION SETS & PLANTS see below				
PARSNIPS-Improved Hollow Crown...	.20	.55	1.60	
PARSLEY- Extra triple curled.....	.20	.55	1.75	
PEAS-Alaska, Am.Wonder, Laxton's Prog.Gem	.15	.45		
PUMPKIN-Early Sugar & Cheyenne...	.20	.60	2.00	
RADISH-Scarlet Turn.;Wh.Tip;Icicle.	.15	.45	1.25	
RU TABAGA-Am.&rCanadian Purple top.	.15	.30	.80	
SPINACH- King of Denmark.....	.18	.40	.90	
SQUASH- Hubbard & Table Queen....	.20	.60	2.40	
TOMATOES-All early good varieties..	.80	...	...	
WATERMELLON-Large Sweet&Honey Dew	.20	.60	2.40	

## VEGETABLE PLANTS

ONION SETS -25¢ lb. by mail 35¢ lb.  
 ONION PLANTS- Per 100 plants in bunch 15¢; <sup>Postage</sup> extra

# LAWN GRASS SEED

NOT POSTPAID

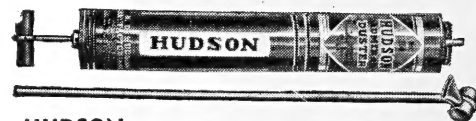
Grass Seed Prices subject to change anytime.

LANDSCAPE MIXTURE-Basic blend;Blue Grass,Red Top & White Clover,etc.(Clover optional) 1 lb.	\$1.75
Mix 20% Poa Trivialis for heavy shaded areas.	
LAWN SEED MIXTURE-Blue Grass,Red Top,Fesques'and with temporary grasses. Per lb.	\$1.50
MERION BLUE GRASS-Sows 750 sq.ft.per pound. This stays greener and makes a tougher turf.	lb.\$4.90
KENTUCKY BLUE GRASS-Sows 200 sq.ft. per lb.	\$1.90
POA TRIVIALIS- Pure seed for shade.Per lb.	\$1.40
CREEPING BENT GRASS- Pure seed. Per lb....	\$1.75
WHITE DUTCH CLOVER- Pure seed. Per lb....	\$1.60

## EVERGREEN SEEDS

Shade the seed beds and keep moist.

COLORADO BLUE SPRUCE	In
BLACK HILL SPRUCE	25¢
NORWAY (Minn.) PINE	Pkts.
PONDEROSA BULL PINE	post
AMERICAN ARBOR VITAE	paid



HUDSON ADMIRAL DUSTER Each \$2.65



HUDSON CADET DUSTER Each 85¢

D-X controls all the common sucking and chewing insects attacking the home orchard and garden, such as —

- Aphis
- Cabbage worm
- Chrysanthemum midge
- Fern caterpillar
- Fall web worm
- Gypsy moth
- Lace fly
- Leaf hopper
- Leaf skeletonizer
- Mexican bean beetle
- Red spider
- Rose leaf beetle



1/2 Pint \$1.75

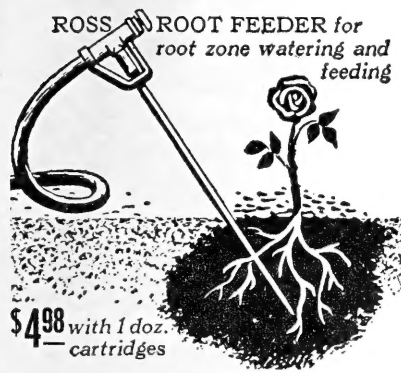


TERRA-LITE (VERMICULITE) New Growing Medium

4-qt. bag	Each \$0.40
1/2-bu. bag	.90
2-bu. bag	1.85
4 cu. ft. bag (approx. 3 1/5 bu.)	2.25



\$1.00

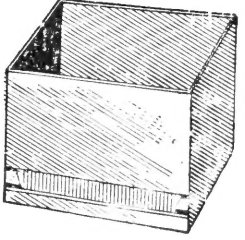
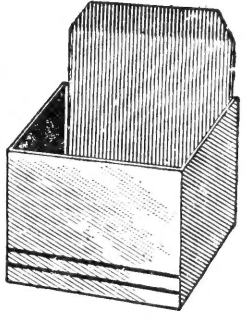
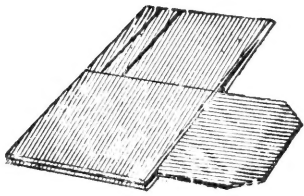




**ROSS ROOT FEEDER** for root zone watering and feeding

\$4.98 with 1 doz. cartridges

Starter Cartridge (10-52-17) for quick rooting—to be used for two feedings after transplanting.  
 Neutral Cartridge (8-16-8) for most plants, roses, shrubs and trees. Contains all growth elements.  
 Acid Cartridge (10-20-20) for balanced growth for evergreens, berries, apples and all acid-loving plants.  
 Above cartridges \$1.00 a dozen, \$1.20 postpaid.

**BERRY BOXES**



- 200 Folding Pint Boxes in Case. Per Case \$ 3.50
- 125 Folding Quart Boxes in Case. Per Case 2.70
- 100 Quart Baskets in bulk..... 2.50
- 500 Quart Baskets . Full carton  11.50
- 100 Pint Baskets in bulk..... 1.25
- 500 Pint Baskets in bulk.....  9.00

ABOVE PRICES subject to Change.

**M-E MUSTANG!**

*Small in Size and Price—But Man! What a Job it Does!*

Outperforms any other low-priced rotary tiller — greatest ever made for home gardeners! Tills, cultivates, weeds, mulches — easy to handle in small plots, corners, close to shrubs. 2½ HP engine. M-E's famous universal non-winding tines (guaranteed against breakage), attachments available



Attachments available

Authorized Dealer



**Pole Pruning Saw Shear and Hook**

For cutting branches up to ¾ in. in diameter. 9½ in. blade. \$6.30 Each

6 ft. pole to fit in saw head above with metal sleeve on bottom of pole to fit pole below. \$3.50  
 Sytka Spruce extension pole with metal ends to use on pole above. With both metal ends more poles can be added. 6 ft. Each \$6.30

**FERTILIZER AND SUPPLIES**

- |   |           |                                      |                               |
|---|-----------|--------------------------------------|-------------------------------|
| PRICES F.O.B. Battle Lake   | 10 lbs.   | 50                                   | 100                           |
| MELORGANITE.....  | \$ .65    | \$2.70                               | \$4.50                        |
| SCOTT'S TURF BUILDER.....   | 1.35      | 3.95                                 | 7.85                          |
| SCOTT'S WEED & FEED-2500 sq.ft.   | \$2.95;   | 11,000 sq.                           |                               |
| ft.   | \$11.75.  | Feeds your lawn and kills dandelions |                               |
| SCALECIDE- Dormant oil spray on Cotoneaster, Red Dogwood, Lilacs, and some trees. | 1 quart   | \$1.25                               |                               |
| ROSE DUST OR SPRAY-1 lb. sifter canisters   |           | 1.00                                 |                               |
| WETTABLE SULFUR-Use against Red Spider on the Evergreens (& discourages Dogs)     | 2 lb. box | ....                                 | .75                           |
| PEST-B-GONE- Handy DDT Duster and Dust  | .....     | .65                                  |                               |
| STIRRUP SPRAY PUMP- Pump liquid fertilizers and sprays out of ordinary pail.      | Each      | .....                                | \$2.00                        |
| FOLDING PLANT SUPPORTS- Heavy galvanized wire.                                    |           |                                      |                               |
| 6 for   | \$1.75;   | 12 for                               | \$3.00 (For Peonies, Tomatoes |

**BLUEBERRY OFFER**

Because the plants are not self-fertile, we give you this special combination offer of three varieties:

- ✓ 1 Rancocas. 12-18 in., 3-yr. plant.
  - ✓ 1 Rubel. 12-18 in., 3-yr. plant.
  - ✓ 1 Jersey. 12-18 in., 3-yr. plant.
- } 1 each of all three, **\$3.95**

Shipped with 1 lb. Aluminum Sulphate  
**RANCOCAS.** Early **RUBEL.** Midseason.  
**JERSEY.** Late.

**FREE.** With each order of three plants, you will receive 1 pound of aluminum sulphate

Address All Orders to

# SWEDBERG NURSERY

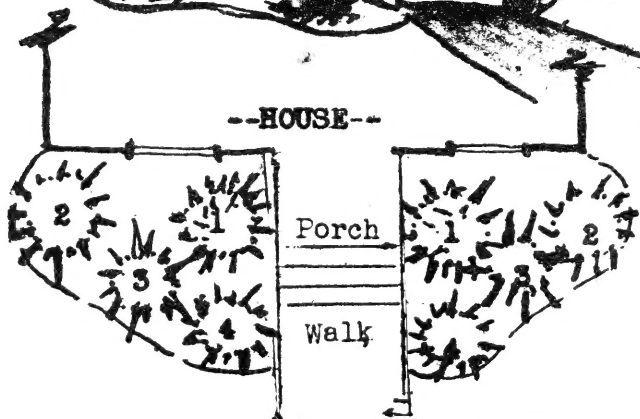
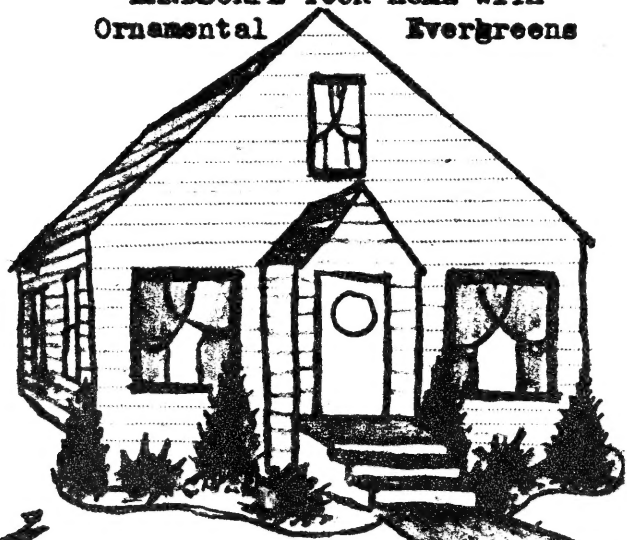
Battle Lake, Otter Tail County, Minnesota

"Service Quality and Fair Prices since 1915"

STATE INSPECTORS HAVE INSPECTED ALL STOCK OFFERED

Sec. 34.66 P. L. & R.  
U. S. POSTAGE  
PAID  
Battle Lake, Minn.  
Permit No. 1

LANDSCAPE YOUR HOME WITH  
Ornamental Evergreens



EVERGREEN PLANTING ABOVE AS SHOWN

KEY	QUA	NAME	B&B	SIZE	PRICE
1...	2..	Arbor Vitae Pyr.	2'		\$9.00
2...	2..	Red Cedar Jun.	1½'		9.00
3...	2..	Savin Juniper.	15"	10.00	
4...	2..	Mugho Pine....	10"	9.00	
8 EVERGREENS B&B					\$ 37.00
1954 SPRING PRICE					\$32.00

*Librarian UPS Dept  
Mr Ralph R Shaw  
The Librarian  
Dept of Agriculture  
Washington D.C.*

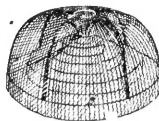
POSTMASTER: IF NOT DELIVERED IN  
10 DAYS, CHECK REASON  
RETURN POSTAGE GUARANTEED.

USE EVERGREENS  
EVERYWHERE



### SUPPORT STRIPS

If you plan on using either plastic cover or netting, strips must be installed first as support. **\$3.95**



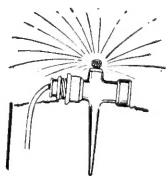
### NETTING \$6.95

Covers support strips and protects bed from birds. Also holds leaves in winter as cover.



### PLASTIC COVER

New type, weathers well. Acts as a cold frame or greenhouse for early planting and frost protection. **\$6.95**



### COMPLETE SPRINKLER \$5.25

Includes nozzle, copper tubing and hose connection at base. Runs through bed and out under bottom band to connect with garden hose.

